

USDA-ARS

Customer Stakeholder Workshop

# Pasture, Forage, and Rangeland Systems

## Biomass Research Centers

Mickey McGuire  
Associate Area Director  
Fort Collins, CO



# ARS Mission

ARS conducts research to develop and transfer solutions to agricultural problems of high national priority and provide information access and dissemination to:

- ensure high-quality, safe food, and other agricultural products
- assess the nutritional needs of Americans
- sustain a competitive agricultural economy
- enhance the natural resource base and the environment
- provide economic opportunities for rural citizens, communities, and society as a whole

# National Program Structure

## Animal Production & Protection

Food Animal Production

Animal Health

Veterinary, Medical, & Urban Entomology

Aquaculture

## Natural Resources

Water Availability and Watershed Management

Climate Change, Soils & Emissions

**Bioenergy**

**Pasture, Forage and Rangeland Systems**

Manure & Byproduct Utilization

Agricultural System Competitiveness & Sustainability

## Crop Production & Protection

Plant Genetic Resources, Genomics & Genetic Improvement

Plant Diseases

Crop Protection & Quarantine

Crop Production

Methyl Bromide Alternatives

## Nutrition, Food Safety/Quality

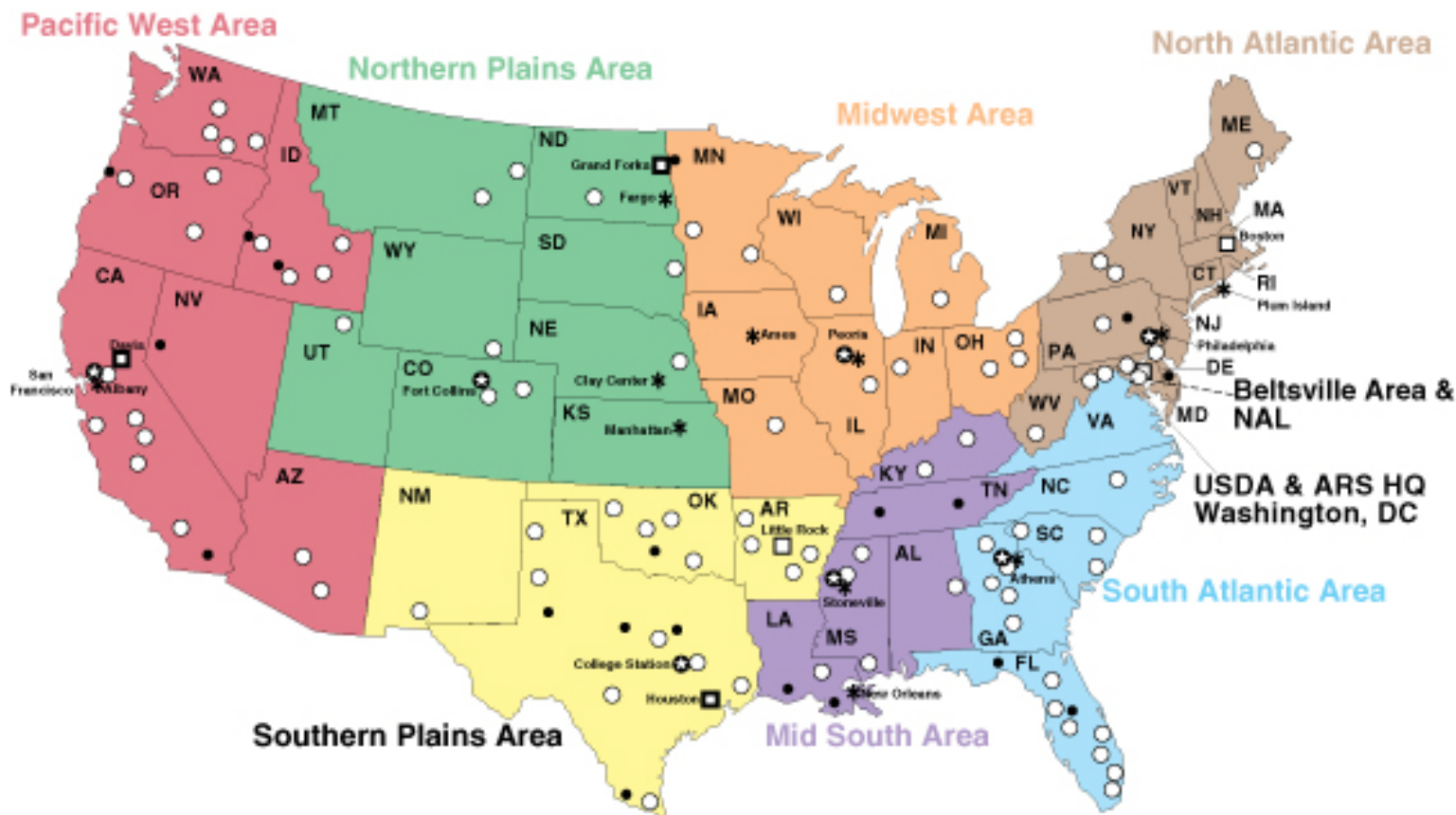
Human Nutrition

Food Safety (animal & plant products)

Quality and Utilization of Agricultural Products



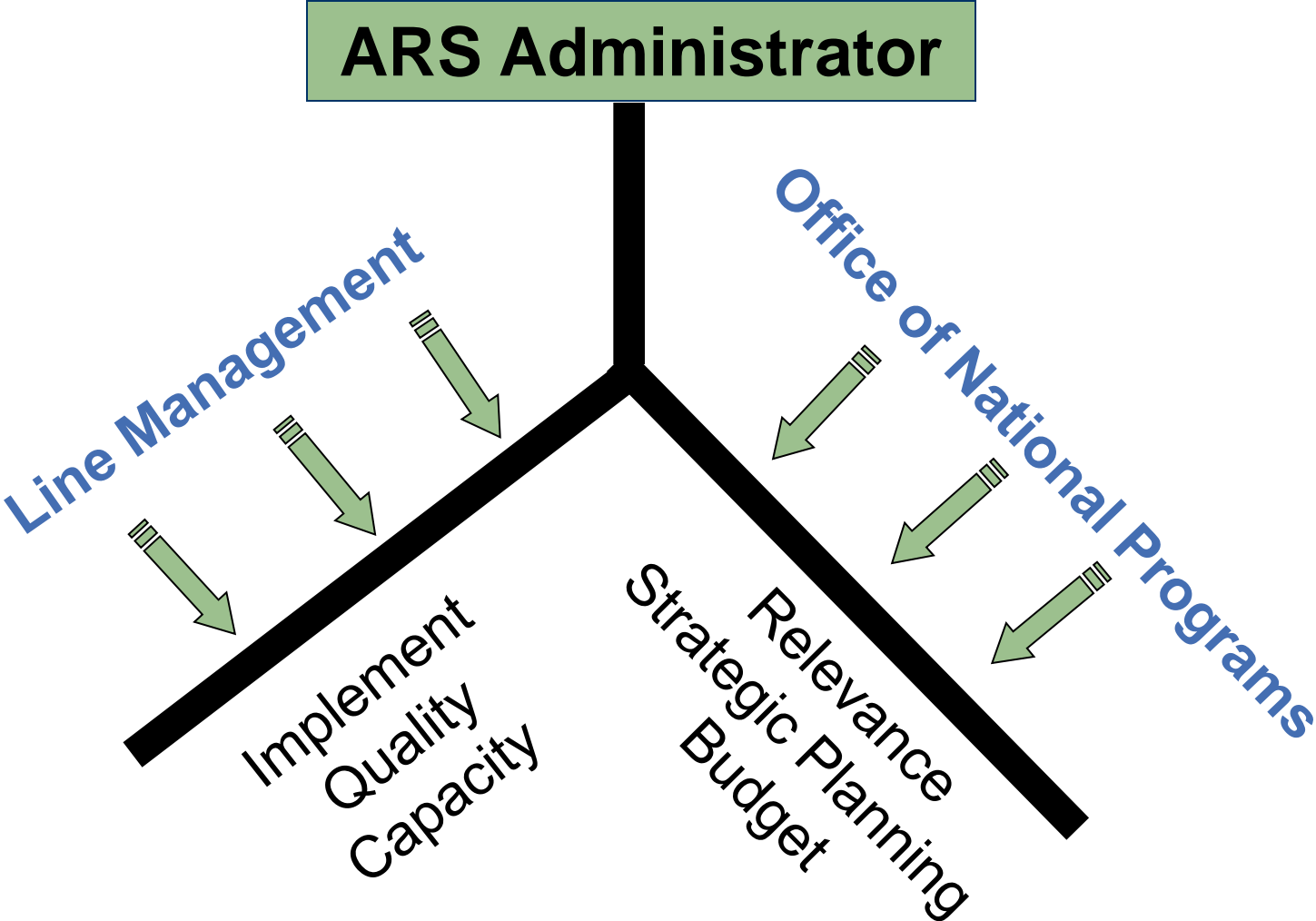
# ARS Research Locations



- ☆ Area Offices Headquarters
- \* Research Centers
- Human Nutrition Centers
- Research Locations
- Research Worksites

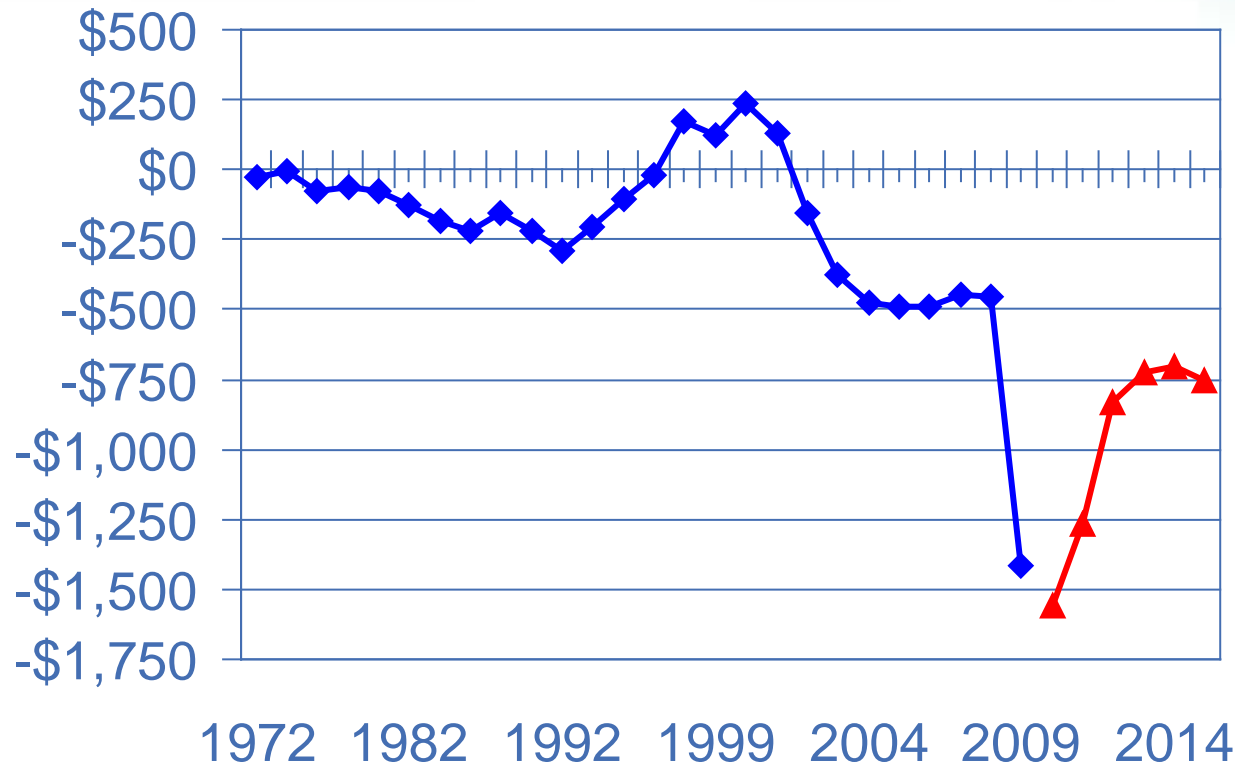


# ARS Matrix Management



# Federal Government Annual Deficit/Surplus

\$ Billions



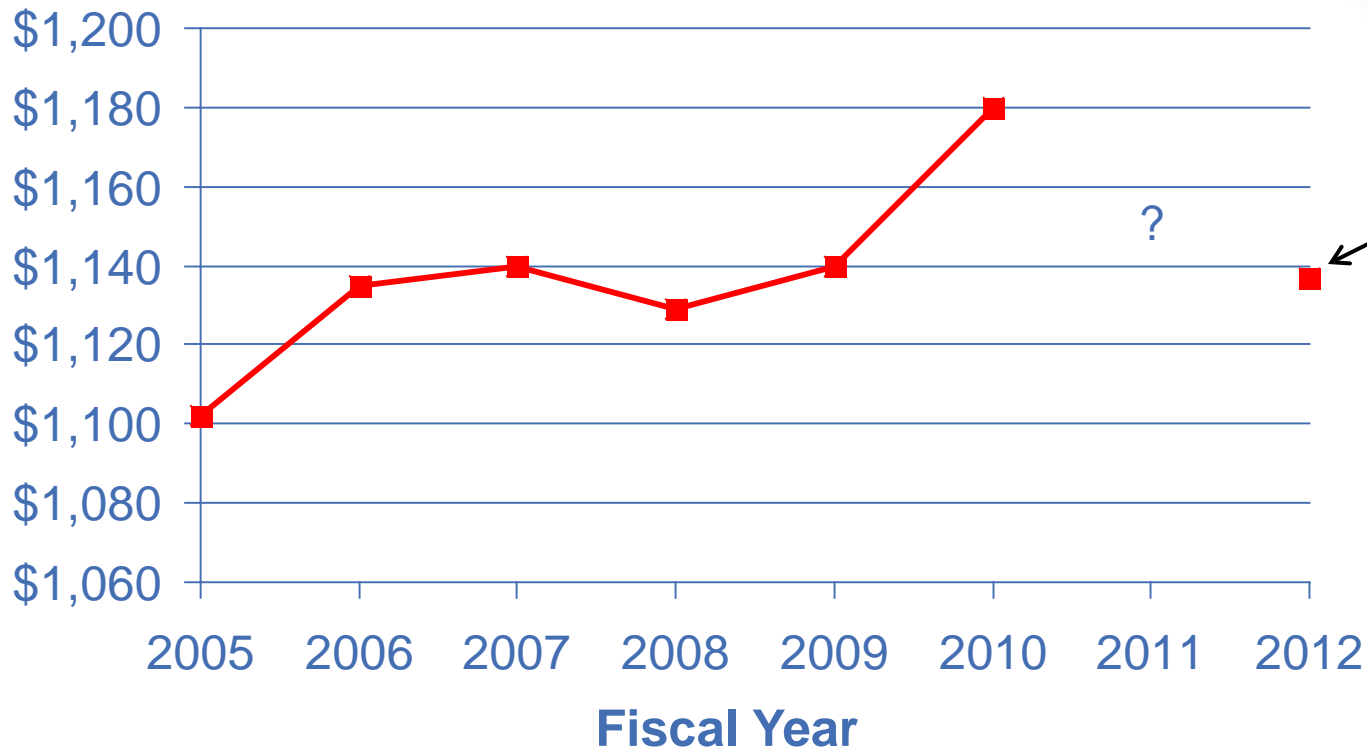
**Federal Debt**  
**\$13.9 Trillion**  
at year-end  
2010

◆ Actual Deficit/Surplus ▲ Projected Deficit

*Projections reflect assumptions that may significantly underestimate actual deficits.*

# ARS Annual Program Budget

**\$ Million**



President's proposed

# General R&D Program Guidance

- The combination of finite resources and a multitude of new research opportunities requires careful attention to funding priorities and wise choices by agency managers
- Agencies must vigorously evaluate existing programs and redirect available resources, as appropriate, from lower-priority areas to activities that address the Administration's high priority areas.



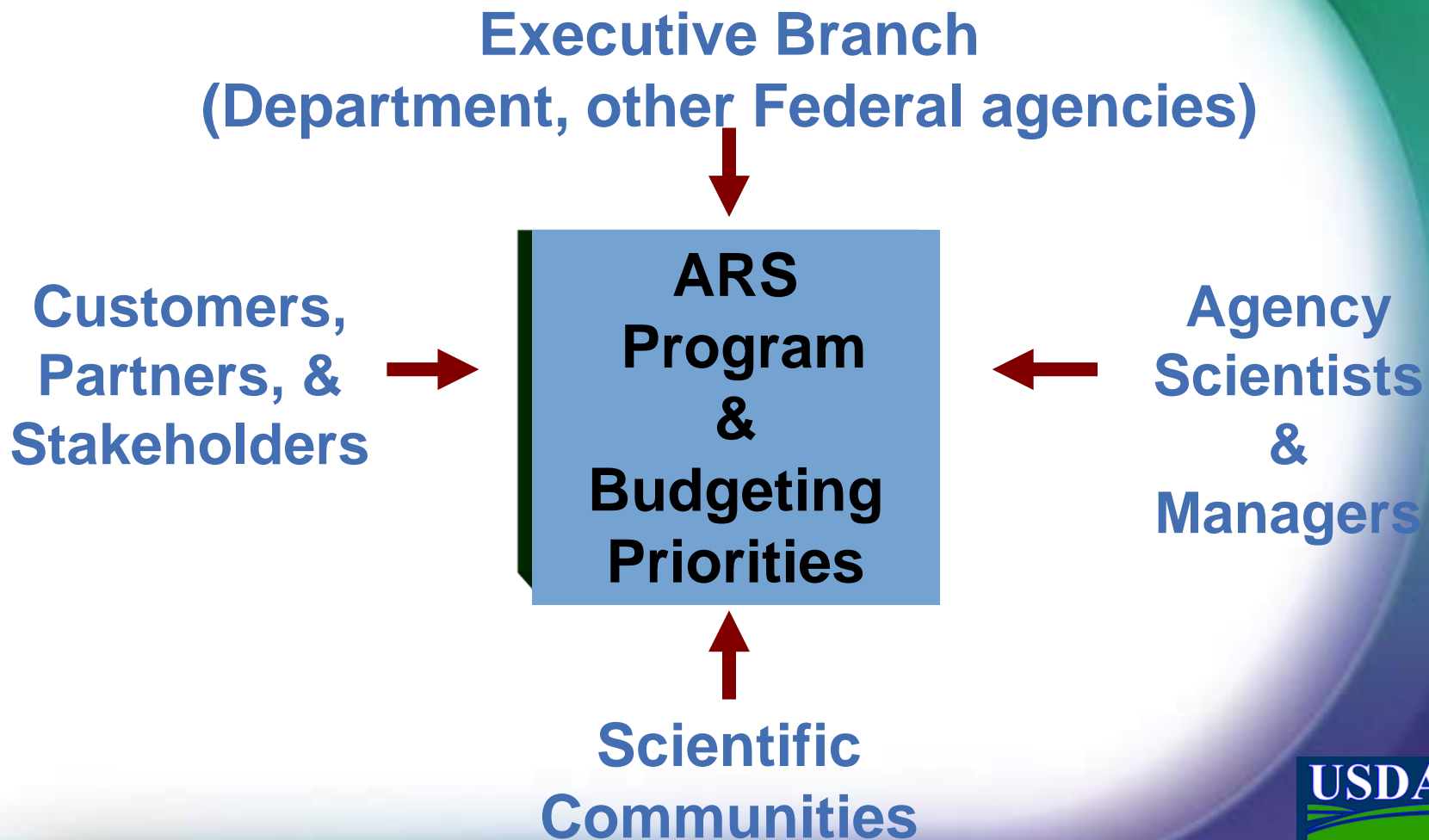
# General R&D Program Guidance

- Administration's high priority areas for Agriculture Research:
  - Bioenergy
  - Children's Nutrition & Health
  - Climate Change
  - Food Safety
  - Global Food Security
- R&D Investment Criteria
  - Relevance
  - Quality
  - Performance

# Performance Based Management

- Focuses attention on customer needs & achieving desired outcomes & results, not just effort (e.g., studies, data collection)
- Assures results-oriented performance
- Focuses on accountability rather than compliance

# How ARS Plans and Sets Research Priorities



**1. Stakeholder Workshop**

**2. National Program  
Action Plan developed**

**3. Program  
Priorities set  
(PDRAM)**

**4. Research  
Project Plan  
prepared**

**5. OSQR Review &  
Certification**

**6. Research initiated**

**7. Annual  
progress reviews**

**8. Retrospective  
evaluation**

**ARS  
Research  
Planning  
Cycle**

# Working Together to Meet Your Needs

- Input: What are your needs; what problems do you have that we can solve?
- Action Plan: With input gathered from this workshop and other sources, ARS will prioritize your needs.

# Working Together to Meet Your Needs

- Expectations:
  - Our scientists are strategically located across the country and work well together.
  - In times of flat or decreasing budgets, we need to focus on the highest priority areas.
  - We need to be at our best.
  - By leveraging resources within ARS and with our private and public sector collaborators, progress will occur more rapidly than by working alone.

# Questions and Comments?

<http://www.ars.usda.gov>