

Table 2. Most Common Serotypes among *Salmonella* Isolates from Food Animals, 2005

Animal Source	Rank	Serotype	n	%
Chickens (n=1989)	1	Kentucky	919	46.2
	2	Heidelberg	283	14.2
	3	Enteritidis	173	8.7
	4	I 4,[5],12:i:-	102	5.1
	5	Typhimurium var. 5-	100	5.0
	6	Typhimurium	83	4.2
	7	Montevideo	62	3.1
	8	Schwarzengrund	51	2.6
	9	Thompson	23	1.2
	10	Mbandaka	20	1.0
Subtotal			1816	91.3
		Others	173	8.7
Total			1989	100.0

Animal Source	Rank	Serotype	n	%
Turkey (n=227)	1	Hadar	48	21.1
	2	Saintpaul	29	12.8
	3	Heidelberg	24	10.6
	4	Reading	19	8.4
	5	Schwarzengrund	14	6.2
	6	Illa 18:z4,z23:-	11	4.8
	7	Senftenberg	8	3.5
	8	Agona	7	3.1
	9	Albany	6	2.6
	10	Muenchen	5	2.2
		Kentucky	5	2.2
		Newport	5	2.2
		Typhimurium	5	2.2
Subtotal			186	81.9
		Others	41	18.1
Total			227	100.0

Animal Source	Rank	Serotype	n	%
Cattle (n=329)	1	Montevideo	43	13.1
	2	Newport	27	8.2
	3	Muenster	24	7.3
	4	Anatum	21	6.4
	5	Typhimurium var. 5-	17	5.2
	5	Typhimurium	17	5.2
	6	Mbandaka	15	4.6
	6	Agona	15	4.6
	7	Dublin	13	4.0
	8	Cerro	12	3.6
8	Reading	12	3.6	
9	Meleagridis	9	2.7	
10	Kentucky	9	2.7	
Subtotal			234	71.1
		Others	95	28.9
Total			329	100.0

Animal Source	Rank	Serotype	n	%
Swine (n=301)	1	Derby	85	28.2
	2	Typhimurium var. 5-	36	12.0
	3	Infantis	27	9.0
	4	Anatum	16	5.3
	5	Johannesburg	15	5.0
	6	Saintpaul	11	3.7
	6	Reading	11	3.7
	6	London	11	3.7
	7	Adelaide	10	3.3
	8	Heidelberg	8	2.7
9	Agona	7	2.3	
10	Hadar	6	2.0	
10	Typhimurium	6	2.0	
10	Manhattan	6	2.0	
Subtotal			255	84.7
		Others	46	15.3
Total			301	100.0

Figure 1. Chickens Serotype Percent Distribution by Year in Relation to Top Serotypes Identified in 2005

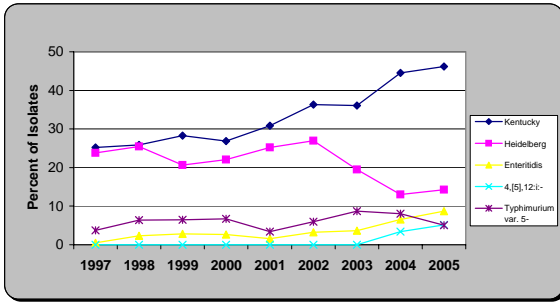


Figure 2. Cattle Serotype Percent Distribution by Year in Relation to Top Serotypes Identified in 2005

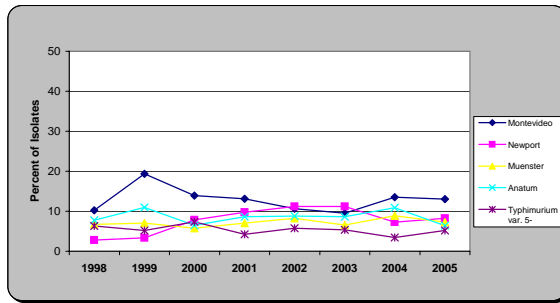


Figure 3. Turkey Serotype Percent Distribution by Year in Relation to Top Serotypes Identified in 2005

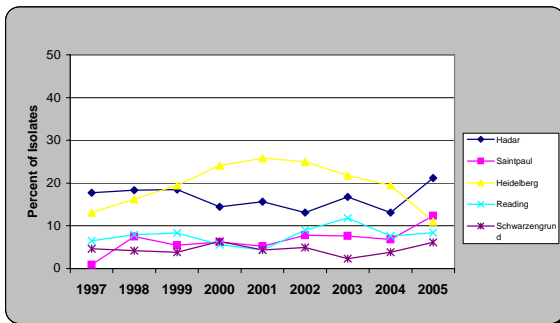


Figure 4. Swine Serotype Percent Distribution by Year in Relation to Top Serotypes Identified in 2005

