

Cell line designation: IPLB-Sf21AE

Tissue source: *Spodoptera frugiperda* pupal ovaries

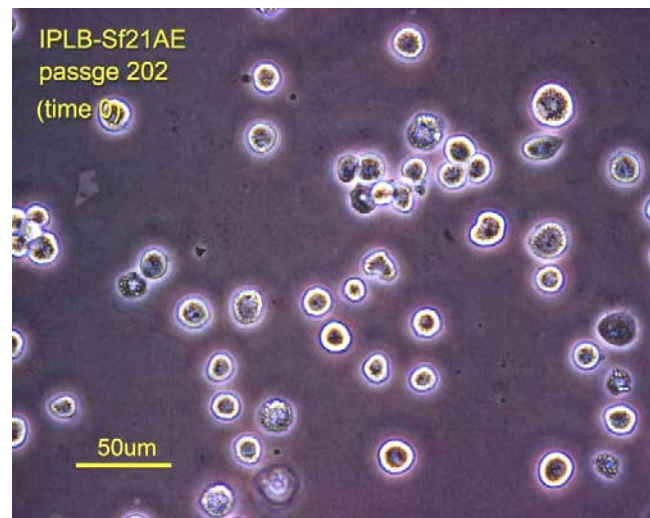
Date initiated: January 1969

Morphology: Round and short spindle-shaped

Karyology: polyploid

Culture medium: TNM-FH
(aka modified Grace's medium)

100ml Grace's
0.3 g lactalbumin hydrolysate
0.3 g TC yeastolate
10ml Fetal Bovine Serum



Subculture procedure: Place a confluent (1-week old) culture at 4°C for 20 minutes. Add 3.0 ml fresh medium to a new 25-cm² culture flask. Suspend cells by sharply striking the flask on the palm of your hand or by flushing with medium from a pipet. Transfer 1.0 ml of old culture to new flask. Incubate at 26-28°C

Comments: This line was originally established by Vaughn et al. in 1969 using Yunker, Cory, Vaughn medium (1967) supplemented with 2.6% heat-treated *Bombyx mori* hemolymph. Following establishment, the line was provided to the NERC Unit of Invertebrate Virology (Oxford, U.K.) where it was adapted to growth in medium containing fetal bovine serum instead of insect hemolymph (the “AE” in the designation refers to “adapted in England”). The line is susceptible to several baculoviruses and is widely used in research with AcMNPV.

Reference: Vaughn, J. L., Goodwin, R. H., Tompkins, G. J., and McCawley, P. 1977. The establishment of two cell lines from the insect *Spodoptera frugiperda* (Lepidoptera: Noctuidae).

In Vitro 13:213-217.