

Identification of Molecular Markers Linked to the Stem Rust Resistance Gene *rpg4* in Barley

I. G. Borovkova, B. J. Steffenson, Y. Jin, J. B. Rasmussen, A. Kilian,
A. Kleinhofs, B. G. Rossnagel, and K. N. Kao

First, second, third, and fourth authors: Department of Plant Pathology, North Dakota State University, Fargo 58105; fifth and sixth authors: Department of Crop and Soil Sciences and Genetics and Cell Biology, Washington State University, Pullman 99164; seventh author, Crop Development Centre, University of Saskatchewan, Saskatoon S7N 0W0 Canada; and eighth author: Plant Biotechnology Institute, National Research Council Canada, Saskatoon, Saskatchewan S7N 0W9.

Permanent address of A. Kilian: Department of Genetics, Silesian University, Katowice, Poland.

We thank T. G. Fetch, Jr., and C. Dokken for excellent technical assistance. This research was supported in part by USDA NRICGP agreement 92-37311-7943, the North American Barley Genome Mapping Project, and the American Malting Barley Association. North Dakota Agricultural Experiment Station Journal article 2217.

Accepted for publication 21 October 1994.

ABSTRACT

Borovkova, I. G., Steffenson, B. J., Jin, Y., Rasmussen, J. B., Kilian, A., Kleinhofs, A., Rossnagel, B. G., and Kao, K. N. 1995. Identification of molecular markers linked to the stem rust resistance gene *rpg4* in barley. *Phytopathology* 85:181-185.

The gene *rpg4* in barley confers resistance to pathotype QCC of *Puccinia graminis* f. sp. *tritici*. To facilitate the efficient transfer of *rpg4* into breeding lines, an investigation was initiated to identify molecular markers linked to the gene. A doubled haploid population (125 individuals) derived from Q21861, the source of *rpg4*, was subjected to bulked segregant analysis by using random amplified polymorphic DNAs (RAPDs) and restriction fragment length polymorphisms (RFLPs). From 500 10-mer primers evaluated, only three reliably amplified fragments in one of the DNA

bulks and not in the other. Linkage of the three RAPD markers, OPP-05 (900), OPH-13 (1600), and OPH-15 (1000), with *rpg4* was confirmed by segregation analysis of the doubled haploid progeny. Primer OPH-15 generated the most closely linked (0.8 centimorgans [cM]) marker to *rpg4*. RFLP probes were used to map *rpg4* and associated RAPD markers to chromosome 7M. The RFLP markers, ABG390 and MWG740, mapped 5.7 and 4.9 cM distal and proximal to the resistance gene, respectively. The RAPD and RFLP markers identified for *rpg4* in this study should facilitate the efficient transfer of stem rust resistance in barley germ plasm.

Additional keywords: *Hordeum vulgare*, molecular marker-assisted selection.

For more than 50 yr, stem rust (caused by *Puccinia graminis* Pers.:Pers. f. sp. *tritici* Eriks. & E. Henn.) of barley (*Hordeum vulgare* L.) has been controlled through the wide deployment of the resistance gene *Rpg1* in cultivars of the northern Great Plains (23). However, during 1991 and 1992, minor epidemics of stem rust developed on barley, resulting from the appearance of a virulent *P. g. tritici* pathotype, Pgt-QCC. Pathotype QCC has increased in prevalence over the past 3 yr and is now one of the most common virulence types of *P. g. tritici* in the United

States (20). Given the widespread distribution of pathotype QCC and the genetic uniformity of the host for susceptibility to this pathotype, epidemics may continue to threaten barley until adequate levels of stem rust resistance are transferred into new cultivars.

Several sources of resistance to pathotype QCC were recently identified from a diverse collection of barley germ plasm (7). One of the most resistant accessions identified from this study was Q21861, a breeding line originating from the program of the International Maize and Wheat Improvement Center (CIMMYT) in Mexico. Q21861 possesses a recessive gene (*rpg4*) that confers resistance to pathotype QCC at the seedling stage

(8,24) and presumably at the adult plant stage as well. An obvious strategy for combating the threat of stem rust on barley is to transfer both *Rpg1* and *rpg4* into new cultivars. The retention of *Rpg1* in cultivars is essential because this gene has proven durable against many pathotypes of the stem rust pathogen (23).

The transfer of both stem rust resistance genes into advanced barley lines will significantly complicate the breeding process. This is especially true for the development of cultivars used in malting, in which over 25 different quality traits must be considered in addition to yield and numerous agronomic traits (23). *Rpg1* and *rpg4* can be detected at the seedling stage, but only under fairly rigorous temperature-control conditions during incubation (8,24). The simultaneous detection of *Rpg1* and *rpg4* in barley plants is difficult because the resistance genes are best expressed under different incubation temperatures (8). The efficient transfer of resistance genes can be facilitated by the use of molecular markers, e.g., random amplified polymorphic DNAs (RAPDs) or restriction fragment length polymorphisms (RFLPs). If a close linkage is found between a molecular marker and a disease resistance gene, the marker can be exploited for the indirect selection of the gene without the need for disease testing (14). Several disease resistance genes so tagged may then be pyramided by means of molecular marker-assisted selection to increase the durability of resistance in the host.

Recently, a marker based on the polymerase chain reaction (PCR) was developed for the resistance gene *Rpg1* (9). This marker (ABG704) is 0.3 centimorgans (cM) distal to *Rpg1* on chromosome 1P and has proven useful for detecting the resistance gene in several different crosses (9). In this study, we report on the use of bulked segregant analysis for the identification of several RAPD and RFLP markers linked to the stem rust resistance gene *rpg4* in barley.

MATERIALS AND METHODS

Plant materials and stem rust evaluations. A doubled haploid (DH) population (125 lines in total) was produced by anther culture from F_1 plants derived from a cross between Q21861 and SM89010 (24). Q21861 is the source of *rpg4* (8) and was originally derived as a random head selection from a CIMMYT barley breeding nursery. SM89010 is a two-rowed malting line that is susceptible to pathotype QCC. This line was developed at the University of Saskatchewan from a cross between Nairn and Manley (B. L. Harvey, *personal communication*). Rust evaluations were made according to the methods of Steffenson et al (24). Briefly, parents and DH progeny were inoculated with a single uredinial culture (QCC-2) of pathotype QCC when the primary leaves of plants were fully expanded. Then, plants were placed in a mist chamber (20–21 C and 100% relative humidity) for 16 h in the dark, exposed to light (120–160 $\mu\text{mol photon m}^{-2}\text{s}^{-1}$) as the temperature increased from 21 to 24 C, and allowed to dry slowly for approximately 4 h before being placed in a greenhouse at 17–22 C. Two weeks after inoculation, the infection types of plants were assessed by using a 0–4 scale for stem rust (24). Progeny exhibiting infection types 0, 0₁, and 2 were considered to carry the *rpg4* allele for resistance, whereas those exhibiting infection types 3 and 4 were considered to carry the *Rpg4* allele for susceptibility to pathotype QCC (24). Infection phenotypes on the parents and DH progeny were distinct and allowed for the unequivocal identification of progeny carrying the *rpg4* allele for resistance. A 1:1 ratio of resistant to susceptible progeny was found in the DH population (24), thereby confirming the monogenic nature of resistance to pathotype QCC in Q21861 as originally reported by Jin et al (8). DH progeny suspected of having double crossovers between *rpg4* and flanking molecular markers were retested at least twice for their disease reactions.

RAPD analysis. Total genomic DNA was isolated by a combination of the proteinase K and CTAB (cetyltrimethylammonium bromide) methods (10). The concentration of DNA extracted from each genotype was determined by DNA fluorometry (model TKO100, Hoefer Scientific Instruments, San Francisco, CA), and samples were diluted to a concentration of 20 ng/ μl for the PCR

reactions. Aliquots of DNA (5 μl each) from 10–15 resistant or susceptible DH lines were combined to produce two sets of bulked DNA for bulked segregant analysis (15). During the course of this investigation, 500 10-mer primers (Operon Technologies Inc., Alameda, CA) were evaluated for their ability to produce polymorphic fragments in the DNA bulks.

PCR reactions were conducted according to the protocols of Williams et al (28) and were performed in a 10- μl total volume of 1 \times *Taq* polymerase buffer (10 mM Tris-HCl [pH 9.0], 50 mM KCl, 1.5 mM MgCl_2 , and 0.001% gelatin) with 0.1 mM of each dNTP, 0.2 μM primer, 20 ng of genomic DNA, and 1 unit of *Taq* DNA polymerase (Promega Corporation, Madison, WI). Reaction mixtures were overlaid with one drop of mineral oil, and DNA was amplified in a programmable thermal controller (MJ Research, Inc. Watertown, MA). The temperature profile consisted of 45 cycles of 1 min at 94 C, 30 s at 36 C, and 2 min at 72 C. A final 7-min extension (72 C) was given at the end of the cycling period. Amplified DNA fragments were separated by electrophoresis in a 1.5% agarose gel in 1 \times TBE buffer (0.1 M Tris-HCl, 0.1 M boric acid, and 2 mM EDTA, pH 8.3) for 4 h at 100 V. After electrophoresis, the gels were stained with ethidium bromide and visualized on a UV transilluminator. Primers amplifying products that exhibited polymorphisms between the DNA bulks as well as between the parents were subsequently evaluated on all DH progeny.

RFLP analysis. Protocols for DNA extraction, prehybridization, hybridization, and washing of membranes were as described in Kleinhofs et al (10). Initially, Southern blots containing several restriction digests of DNA from Q21861 and bulks of resistant and susceptible DH lines were hybridized with several RFLP probes. Probes exhibiting possible linkage with *rpg4* were subsequently evaluated on all 125 DH progeny.

Genetic analysis. Segregating molecular markers were scored for each of the DH progeny, and linkage analyses were performed with MAPMAKER (12), version 3.0. A logarithm of the odds ratio (LOD) score of 3.0 or greater was established for linkage. The Haldane mapping function (12) was used to convert recombination frequencies to map distances in centimorgans.

RESULTS

Amplification products generated from 500 10-mer primers were evaluated with template DNA from resistant and susceptible bulks. The average number of products amplified per primer was approximately 10; the range was three to 16. Thirty primers generated at least one fragment that was present in one bulk but not

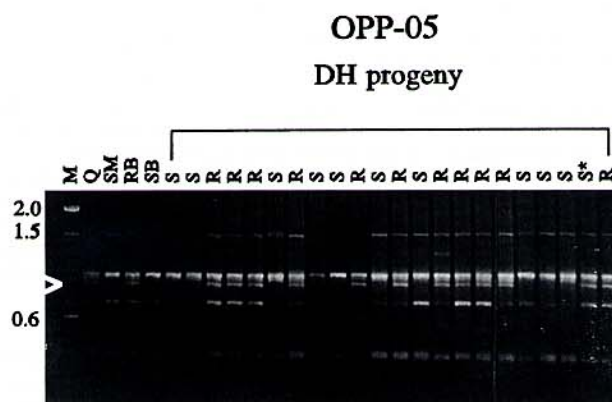


Fig. 1. Bulked segregant analysis with random amplified polymorphic DNA (RAPD) markers for *rpg4* in a doubled haploid population derived from Q21861 \times SM89010. The RAPD products exhibit polymorphisms linked to *rpg4*. Lane 1 (M) is the 100-bp molecular weight ladder (GIBCO BRL). The sizes of the three brightest bands in the ladder are indicated in kilobase pairs. Products amplified by primer OPP-05 are from, lane 2, Q21861 (Q); lane 3, SM89010 (SM); lane 4, resistant bulk (RB); and lane 5, susceptible bulk (SB). Lanes 6–27 are individual doubled haploid progeny. R = resistant; S = susceptible; * = recombinant doubled haploid line; and the arrow indicates the 0.9-kb fragment that is linked to *rpg4*.

The closest marker to *rpg4* was generated by primer OPH-15; this RAPD marker, OPH-15 (1000), mapped 0.8 cM distal to the *rpg4* locus. RFLP marker ABG390 cosegregated with the RAPD marker OPP-05 (900) in this population.

DISCUSSION

Q21861 is one of only a few barley accessions that possess resistance to pathotype QCC of *P. g. tritici* (7). The gene (*rpg4*) conferring resistance to this pathotype was recently described (8) but had not been assigned to a specific chromosome of the barley genome. Using bulked segregant analysis, we identified several RAPD and RFLP markers linked to *rpg4* and were able to identify its location on barley chromosome 7M. These results further validate the utility of bulked segregant analysis (15) in tagging disease resistance genes as reported by other workers (1,5,16,18,19).

The number of reports documenting the linkage of molecular markers with genes conferring resistance to phytopathogenic fungi (2,5,6,16,21,32,33), bacteria (13,30), viruses (3,4,25,31), and nematodes (11,19,26,27) has increased markedly over the past several years. With proper validation, many of these markers will prove valuable for the selection of resistant progeny in segregating populations from breeding programs. For *rpg4* in barley, any one of the several markers identified could serve in such a capacity. The closely linked RAPD markers generated by OPH-15 and OPP-05 could be used for the indirect selection of *rpg4* in barley; however, more reliable and specific assays for the gene can be made by converting the markers into sequence tagged sites (STSs) or sequence characterized amplified regions (SCARs) (17,21,29). The RFLP markers found linked to *rpg4* in this study both detect a single band in most of the restriction enzyme digestions tested, and both hybridize well with barley DNA. These attributes make ABG390 and MWG740 ideal markers for assisted selection at the *rpg4* region but only in laboratories where Southern hybridizations are feasible. In an effort to develop a simple and rapid technique for detecting *rpg4* in breeding programs, we are converting the RAPD and RFLP markers into STSs and SCARs.

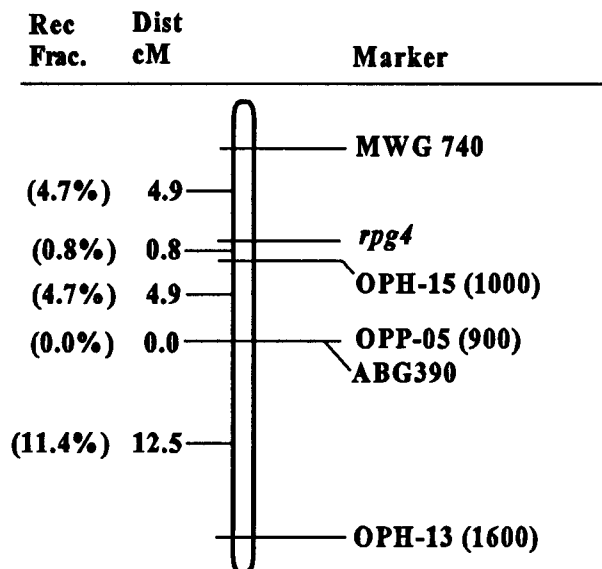


Fig. 4. Linkage map of *rpg4* with associated random amplified polymorphic DNA (RAPD) and restriction fragment length polymorphism (RFLP) markers on barley chromosome 7M. The order and distances of loci were derived by multiple linkage analysis with the MAPMAKER software program (12), version 3.0. Centimorgan distances were calculated from recombination percentages by the Haldane function (12). The map is oriented with MWG740 toward the centromere and OPH-13 (1600) toward the telomere of chromosome 7M. RAPD marker designations were made according to Michelmore et al (15). The size of the polymorphic DNA fragment amplified by the primer is rounded off to the nearest 100 bp and is given in parentheses.

To reduce the threat of the stem rust pathotype QCC on barley, *rpg4* should be incorporated with *Rpg1* in cultivars for the northern Great Plains. The simultaneous detection of these genes by infection type assessments is laborious because it requires the inoculation of plants with two different pathotypes under two different incubation temperatures (8,24). The pyramiding of these resistance genes can be greatly facilitated through molecular marker-assisted selection. Q21861 carries both *rpg4* and *Rpg1* for stem rust resistance (8,24). In a preliminary blind test with an F₂ population (150 progeny) derived from Q21861 × SM89010, the PCR-based markers OPH-05 (900) and ABG704 (9) reliably detected individuals carrying *rpg4* and *Rpg1*, respectively (I. G. Borovkova and B. J. Steffenson, unpublished). In addition to the wheat stem rust pathogen, Q21861 also possesses resistance to the leaf rust (*P. hordei* G. Oth) and powdery mildew (*Blumeria graminis* (DC.) E. O. Speer f. sp. *hordei* Ëm. Marchal) pathogens. Research is underway to identify molecular markers for these other resistance genes by bulked segregant analysis. Since Q21861 is being used as a parent in a number of breeding programs, the tagging of additional resistance genes from it will provide an efficient means of transferring multiple disease resistance into barley.

LITERATURE CITED

- Barua, U. M., Chalmers, K. J., Hackett, C. A., Thomas, W. T. B., Powell, W., and Waugh, R. 1993. Identification of RAPD markers linked to a *Rhynchosporium secalis* resistance locus in barley using near-isogenic lines and bulked segregant analysis. *Heredity* 71:177-184.
- Diers, B. W., Mansur, L., Imsande, J., and Shoemaker, R. C. 1992. Mapping *Phytophthora* resistance loci in soybean with restriction fragment length polymorphism markers. *Crop Sci.* 32:377-383.
- Graner, A., and Bauer, E. 1993. RFLP mapping of the *ym4* virus resistance gene in barley. *Theor. Appl. Genet.* 86:689-693.
- Haley, S. D., Afanador, L., and Kelly, J. D. 1994. Identification and application of a random amplified polymorphic DNA marker for the I gene (potyvirus resistance) in common bean. *Phytopathology* 84:157-160.
- Haley, S. D., Miklas, P. N., Stavely, J. R., Byrum, J., and Kelly, J. D. 1993. Identification of RAPD markers linked to a major rust resistance gene block in common bean. *Theor. Appl. Genet.* 86:505-512.
- Hilbers, S., Fischbeck, G., and Jahoor, A. 1992. Localization of the *Laevigatum* resistance gene *MLLa* against powdery mildew in the barley genome by the use of RFLP markers. *Plant Breed.* 109:335-338.
- Jin, Y., Steffenson, B. J., and Fetch, T. G., Jr. 1994. Sources of resistance to pathotype QCC of *Puccinia graminis* f. sp. *tritici* in barley. *Crop Sci.* 34:285-288.
- Jin, Y., Steffenson, B. J., and Miller, J. D. 1994. Inheritance of resistance to pathotypes QCC and MCC of *Puccinia graminis* f. sp. *tritici* in barley line Q21861 and temperature effects on the expression of resistance. *Phytopathology* 84:452-455.
- Kilian, A., Steffenson, B. J., Saghai Maroof, M. A., and Kleinhofs, A. 1994. RFLP markers linked to the durable stem rust resistance gene *Rpg1* in barley. *Mol. Plant-Microbe Interact.* 7:298-301.
- Kleinhofs, A., Kilian, A., Saghai Maroof, M. A., Biyashev, R. M., Hayes, P., Chen, F. Q., Lapitan, N., Fenwick, A., Blake, T. K., Kanazin, V., Ananiev, E., Dahleen, L., Kudrna, D., Bollinger, J., Knapp, S. J., Liu, B., Sorrells, M., Heun, M., Franckowiak, J. D., Hoffman, D., Skadsen, R., and Steffenson, B. J. 1993. A molecular, isozyme and morphological map of the barley (*Hordeum vulgare*) genome. *Theor. Appl. Genet.* 86:705-712.
- Klein-Lankhorst, R., Rietveld, P., Machiels, B., Verkerk, R., Weide, R., Gebhardt, C., Koornneef, M., and Zabel, P. 1991. RFLP markers linked to the root knot nematode resistance gene *Mi* in tomato. *Theor. Appl. Genet.* 81:661-667.
- Lander, E. S., Green, P., Abrahamson, J., Barlow, A., Daly, M. J., Lincoln, S. E., and Newburg, L. 1987. MAPMAKER: An interactive computer package for constructing primary genetic linkage maps of experimental and natural populations. *Genomics* 1:174-181.
- Martin, G. B., Williams, J. G. K., and Tanksley, S. D. 1991. Rapid identification of markers linked to a *Pseudomonas* resistance gene in tomato by using random primers and near-isogenic lines. *Proc. Natl. Acad. Sci. USA* 88:2336-2340.
- Melchinger, A. E. 1990. Use of molecular markers in breeding for oligogenic disease resistance. *Plant Breed.* 104:1-19.
- Michelmore, R. W., Paran, I., and Kesseli, R. V. 1991. Identification of markers linked to disease-resistance genes by bulked segregant

- analysis: A rapid method to detect markers in specific genomic regions by using segregating populations. *Proc. Natl. Acad. Sci. USA* 88:9828-9832.
16. Miklas, P. N., Stavely, J. R., and Kelly, J. D. 1993. Identification and potential use of a molecular marker for rust resistance in common bean. *Theor. Appl. Genet.* 85:745-749.
 17. Paran, I., and Michelmore, R. W. 1993. Development of reliable PCR-based markers linked to downy mildew resistance genes in lettuce. *Theor. Appl. Genet.* 85:985-993.
 18. Penner, G. A., Chong, J., Wight, C. P., Molnar, S. J., and Fedak, G. 1993. Identification of an RAPD marker for the crown rust resistance gene *Pc68* in oats. *Genome* 36:818-820.
 19. Pineda, O., Bonierbale, M. W., Plaisted, R. L., Brodie, B. B., and Tanksley, S. D. 1993. Identification of RFLP markers linked to the *H1* gene conferring resistance to the potato cyst nematode *Globodera rostochiensis*. *Genome* 36:152-156.
 20. Roelfs, A. P., Long, D. L., and Roberts, J. J. 1993. Races of *Puccinia graminis* in the United States during 1991. *Plant Dis.* 77:129-132.
 21. Schachermayr, G., Siedler, H., Gale, M. D., Winzeler, H., Winzeler, M., and Keller, B. 1994. Identification and localization of molecular markers linked to the *Lr9* leaf rust resistance gene of wheat. *Theor. Appl. Genet.* 88:110-115.
 22. Sogaard, B., and von Wettstein-Knowles, P. 1987. Barley: Genes and chromosomes. *Carlsberg Res. Commun.* 52:123-196.
 23. Steffenson, B. J. 1992. Analysis of durable resistance to stem rust in barley. *Euphytica* 63:153-167.
 24. Steffenson, B. J., Jin, Y., Rossnagel, B. G., Rasmussen, J. B., and Kao, K. Genetics of multiple disease resistance in a doubled haploid population of barley. *Plant Breed.* (In press.)
 25. Timmerman, G. M., Frew, T. J., Miller, A. L., Weeden, N. F., and Jermyn, W. A. 1993. Linkage mapping of *sbm-1*, a gene conferring resistance to pea seed-borne mosaic virus, using molecular markers in *Pisum sativum*. *Theor. Appl. Genet.* 85:609-615.
 26. Uphoff, H., and Wricke, G. 1992. Random amplified polymorphic DNA (RAPD) markers in sugar beet (*Beta vulgaris* L.): Mapping the genes for nematode resistance and hypocotyl colour. *Plant Breed.* 109:168-171.
 27. Weisemann, J. M., Matthews, B. F., and Devine, T. E. 1992. Molecular markers located proximal to the soybean cyst nematode resistance gene, *Rhg4*. *Theor. Appl. Genet.* 85:136-138.
 28. Williams, J. G. K., Kubelik, A. R., Livak, K. J., Rafalski, J. A., and Tingey, S. V. 1990. DNA polymorphisms amplified by arbitrary primers are useful as genetic markers. *Nucleic Acids Res.* 18:6531-6535.
 29. Williamson, V. M., Ho, J.-Y., Wu, F. F., Miller, N., and Kaloshian, I. 1994. A PCR-based marker tightly linked to the nematode resistance gene, *Mi*, in tomato. *Theor. Appl. Genet.* 87:757-763.
 30. Yoshimura, S., Yoshimura, A., Saito, A., Kishimoto, N., Kawase, M., Yano, M., Nakagahra, M., Ogawa, T., and Iwata, N. 1992. RFLP analysis of introgressed chromosomal segments in three near-isogenic lines of rice for bacterial blight resistance genes, *Xa-1*, *Xa-3* and *Xa-4*. *Jpn. J. Genet.* 67:29-37.
 31. Yu, Y. G., Saghai Maroof, M. A., Buss, G. R., Maughan, P. J., and Tolun, S. A. 1994. RFLP and microsatellite mapping of a gene for soybean mosaic virus resistance. *Phytopathology* 84:60-64.
 32. Yu, Z. H., Mackill, D. J., Bonman, J. M., and Tanksley, S. D. 1991. Tagging genes for blast resistance in rice via linkage to RFLP markers. *Theor. Appl. Genet.* 81:471-476.
 33. Zaitlin, D., DeMars, S., and Ma, Y. 1993. Linkage of *rhm*, a recessive gene for resistance to southern corn leaf blight, to RFLP marker loci in maize (*Zea mays*) seedlings. *Genome* 36:555-564.