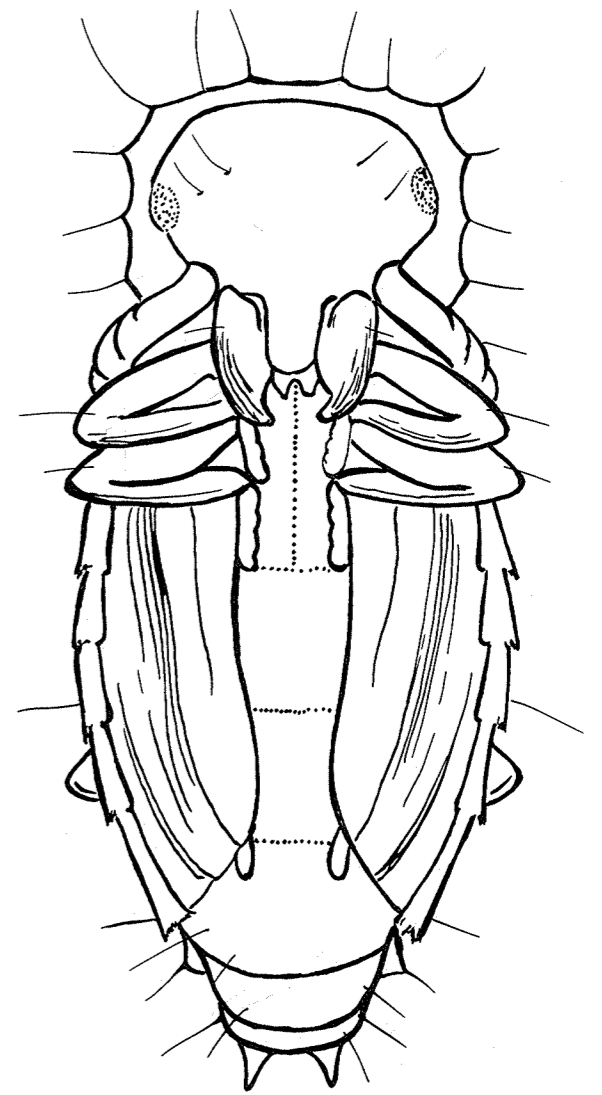


LARVA

GROWN LARVAE ARE SLENDER, PALE IN COLOR, WITH A BLACK HEAD, AND HAVE SLENDER, BLACK, SPINE-LIKE PROCESSES AT TIP OF ABDOMEN.



PUPA

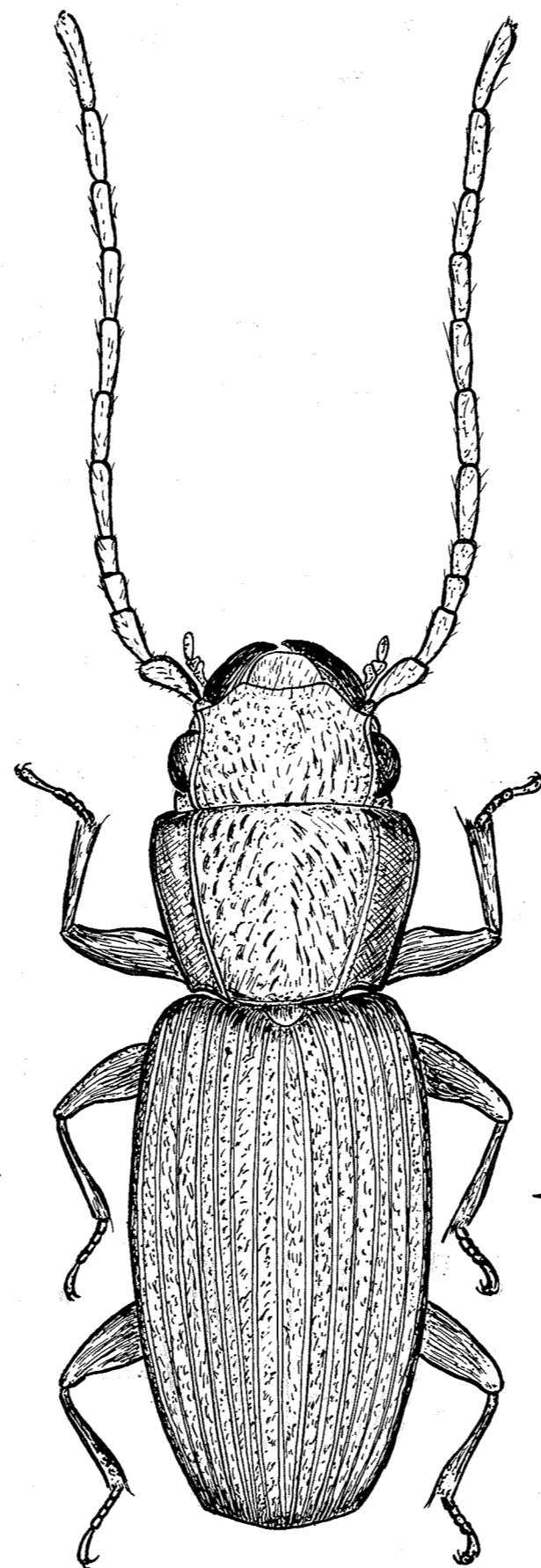
WHEN FULLY GROWN, LARVAE FORM COCOONS OF A GELATINOUS SUBSTANCE TO WHICH FOOD PARTICLES ADHERE. PUPAE FORMED INSIDE THESE COCOONS.

LARVAE FEED ON THE GERM OF WHEAT. ALSO FEED ON DEAD INSECTS.

EACH FEMALE CAN LAY 200 EGGS

EGGS SMALL AND WHITE. EGGS ARE PLACED IN CREVICES ON THE GRAIN OR DROPPED LOOSELY IN FLOUR OR OTHER CEREAL PRODUCTS.

ADULT EMERGES 5 TO 9 WEEKS AFTER EGGS LAID.



### FLAT GRAIN BEETLE

(*Cryptolestes pusillus* (SCHONH.))

BETTER AND LARVAE OF THIS SPECIES RESEMBLE THOSE OF THE RUSTY GRAIN BEETLE SO MUCH IN BEHAVIOUR AND APPEARANCE THAT DISTINCTION IS RARELY MADE BETWEEN THEM BY PEOPLE IN THE GRAIN INDUSTRY. ARE THE SMALLEST OF THE MAJOR GRAIN PESTS ( $\frac{1}{16}$ " LONG). BETTER ARE REDDISH-BROWN WITH FLATTENED BODY. MALES WITH ESPECIALLY LONG, SLENDER ANTENNAE.