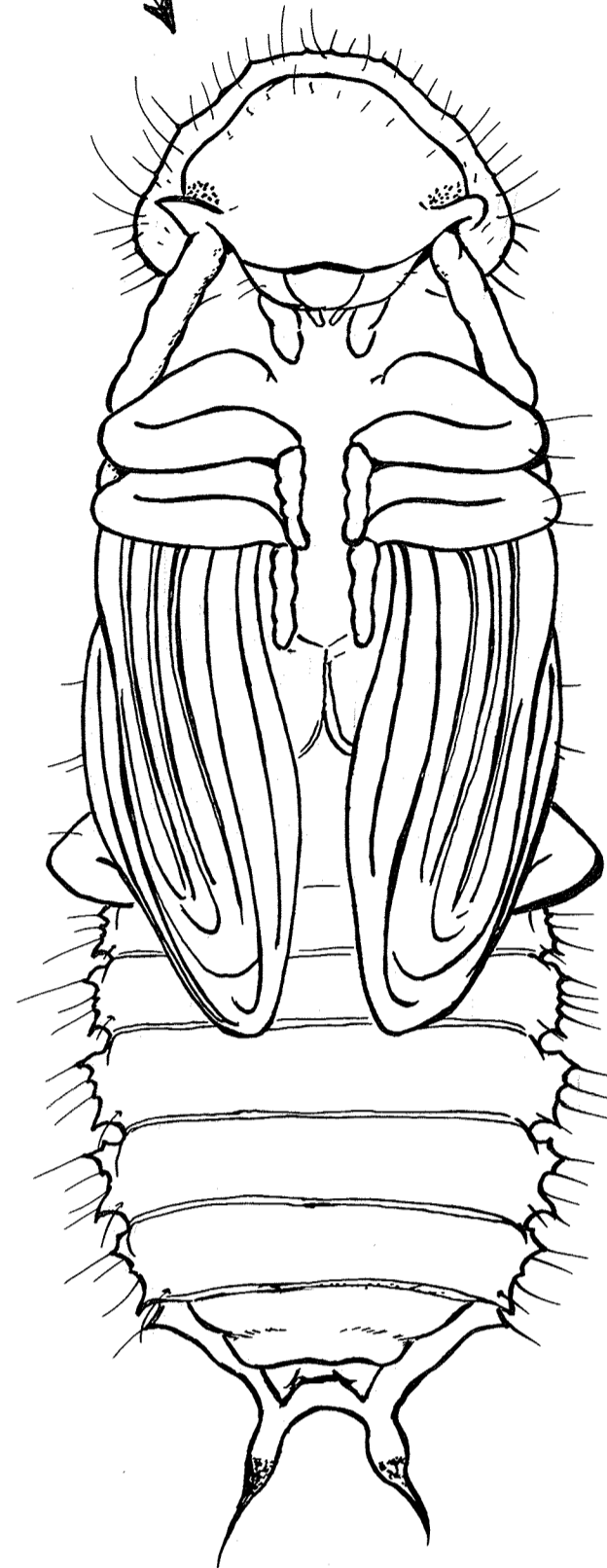
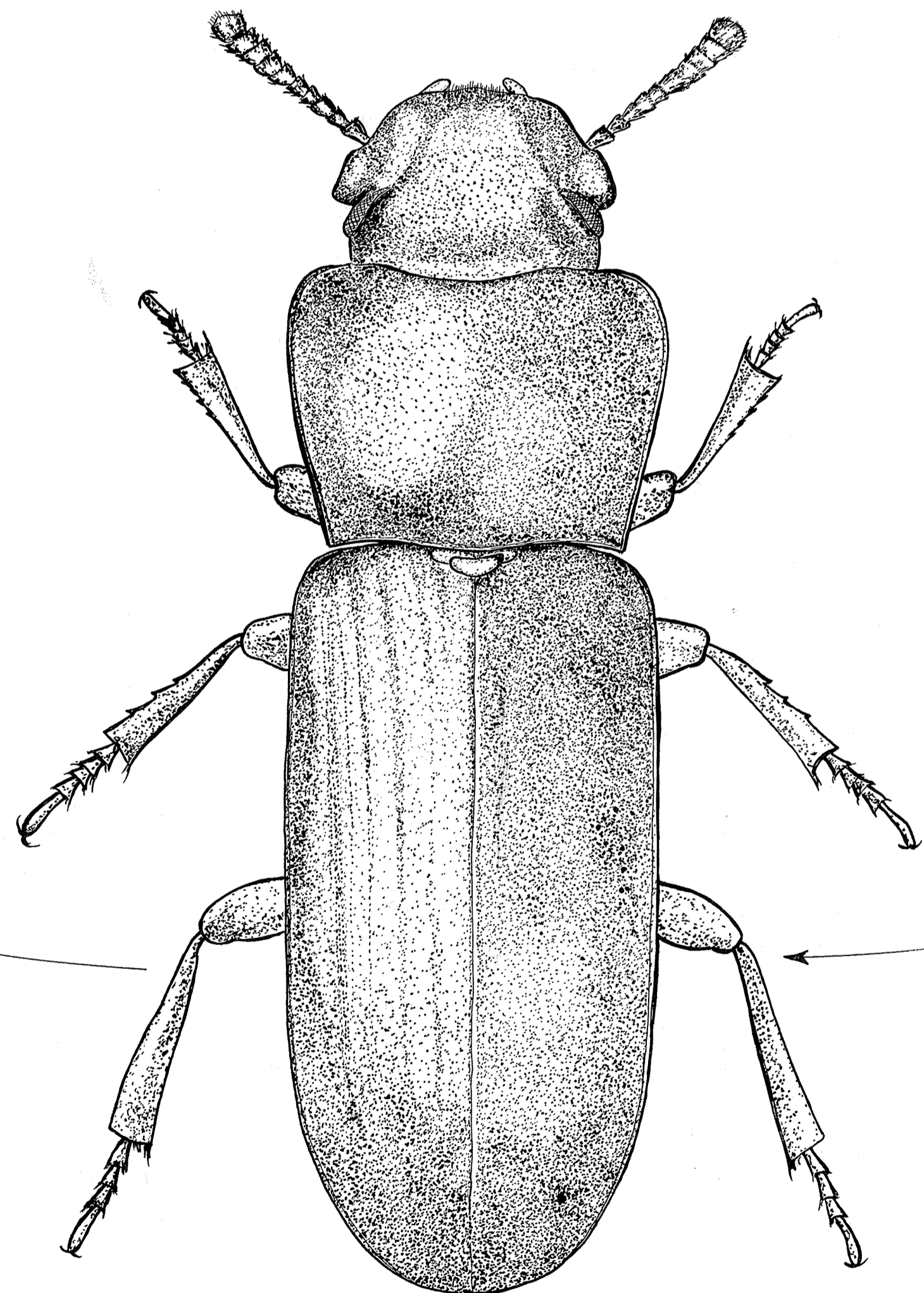


LARVA



PUPA

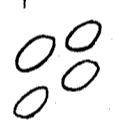


CONFUSED FLOUR BEETLE
(*Tribolium confusum* (Duv.))

WHEN FULLY GROWN ARE ABOUT $\frac{1}{8}$ " LONG. ARE WHITE, TINGED WITH YELLOW. STAGE LASTS 2 WEEKS TO 2 MONTHS

FEED ON FLOUR OR OTHER MATERIAL SUCH AS GRAIN DUST AND THE BROKEN SURFACES OF GRAIN KERNELS.

WHEN HATCHED, LARVAE WORM-LIKE, SLENDER, CYLINDRICAL, AND WIRY IN APPEARANCE



EGGS HATCH 5 TO 12 DAYS

EGGS SMALL, CLEAR, AND STICKY. ARE LAID ON SACKS, CRACKS OR FOOD.

NAKED. AT FIRST IS WHITE, GRADUALLY CHANGING TO YELLOW, THEN BROWN AND SHORTLY AFTERWARDS TRANSFORMING TO ADULT.

STAGE LASTS 1 TO 2 WEEKS

CHANGE TO ADULTS 1 TO 4 MONTHS AFTER EGGS LAID.

BEETLES ELONGATE, SHINY, REDDISH-BROWN, ABOUT $\frac{1}{4}$ " LONG. HEAD AND UPPER PARTS OF THORAX DENSELY COVERED WITH MINUTE PUNCTURES AND WING COVERS ARE RIDGED LENGTHWISE AND SPARSELY PUNCTURED BETWEEN THE RIDGES. RESEMBLES RED FLOUR BEETLE.