

LARVA

LARVA IS CHARACTERISTIC AND CAN BE READILY RECOGNIZED. IS REDDISH OR GOLDEN BROWN, CLOTHED WITH SHORT, SCALELIKE APPRESSED HAIRS AND PROVIDED WITH A TUFT OF LONG HAIRS AT THE END OF THE BODY. IT MOVES SO SLOWLY THEY GIVE APPEARANCE OF GLIDING.

THE LARVAL LIFE MAY RANGE FROM 259 TO 639 DAYS.

PUPA
LARVA PUPATES IN LAST LARVAL SKIN. PUPAL STATE MAY LAST 6 TO 24 DAYS.

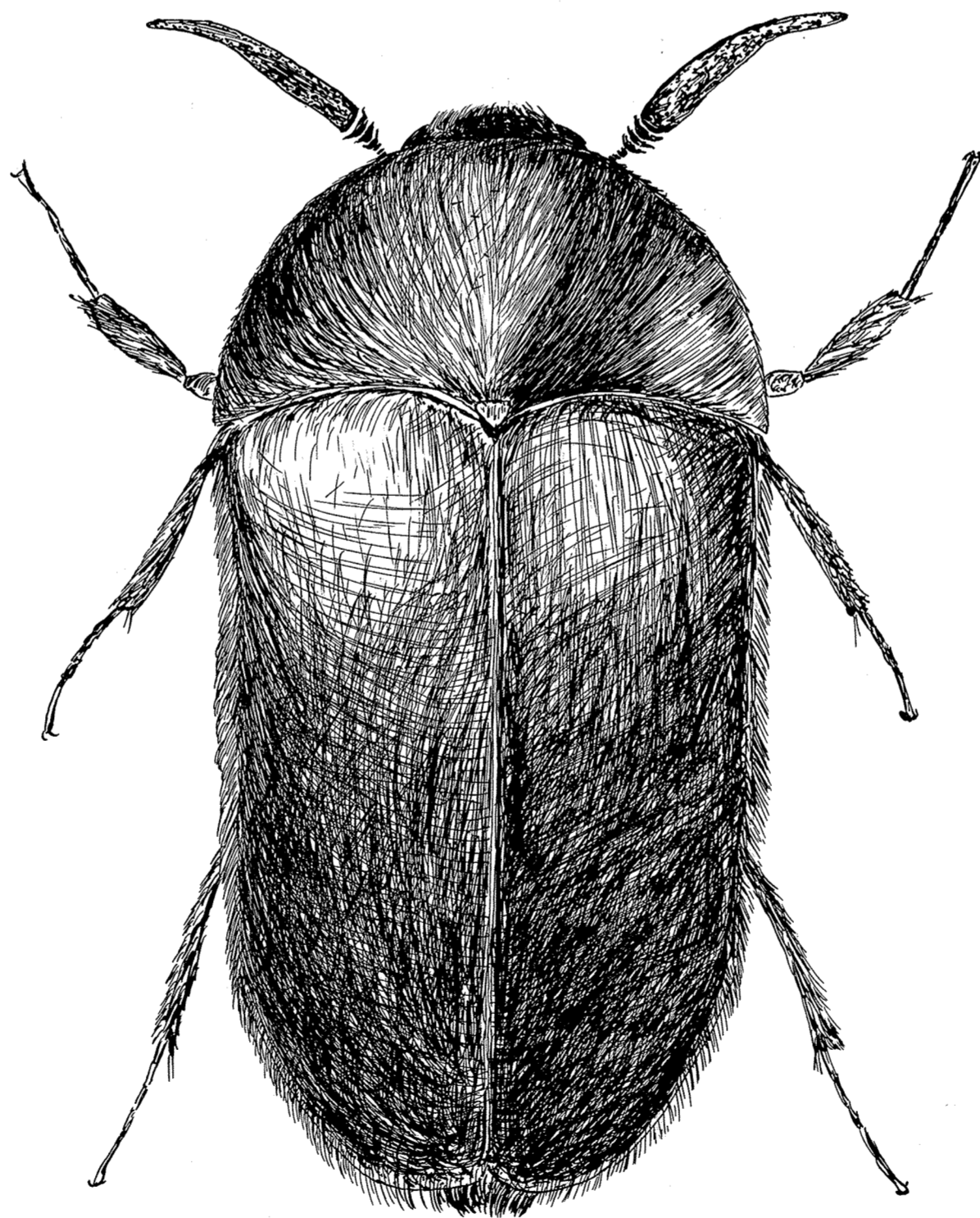
LARVAE REPELLED BY LIGHT. THEY DEVELOP SLOWLY. LARVAE OFTEN FOUND IN ABUNDANCE LIVING IN CRACKS IN FLOORS OF WAREHOUSES WHERE FOODSTUFFS HAVE ACCUMULATED.

ADULTS EMERGE IN SPRING AND EARLY PART OF SUMMER. LIVE 2 TO 4 WEEKS.

EGG

FEMALE LAYS ABOUT 100 EGGS. FEMALE USUALLY DIES AFTER EGG LAYING. EGGS ARE FRAGILE, SMALL, PEARLY-WHITE AND SELDOM SEEN. HATCH IN 6 TO 11 DAYS.

DUE TO SLOW LARVAL DEVELOPMENT, THERE IS ONLY ONE GENERATION PER YEAR



BLACK CARPET BEETLE
(*Attagenus piceus* (Oliv.))

SMALL OVAL BEETLE, BETWEEN $\frac{2}{16}$ TO $\frac{3}{16}$ OF AN INCH LONG. HEAD AND THORAX BLACK, BUT WING COVERS MAY BE EITHER BLACK OR DARK REDDISH BROWN, AND CLOTHED WITH SHORT HAIRS. LEGS AND ANTENNAE ARE YELLOW. BEETLES CAN BE FOUND OUTDOORS IN SUNLIGHT, VERY OFTEN FEEDING ON POLLEN OF FLOWERS, ESPECIALLY *Spiraea*. IS COSMOPOLITAN IN DISTRIBUTION.