

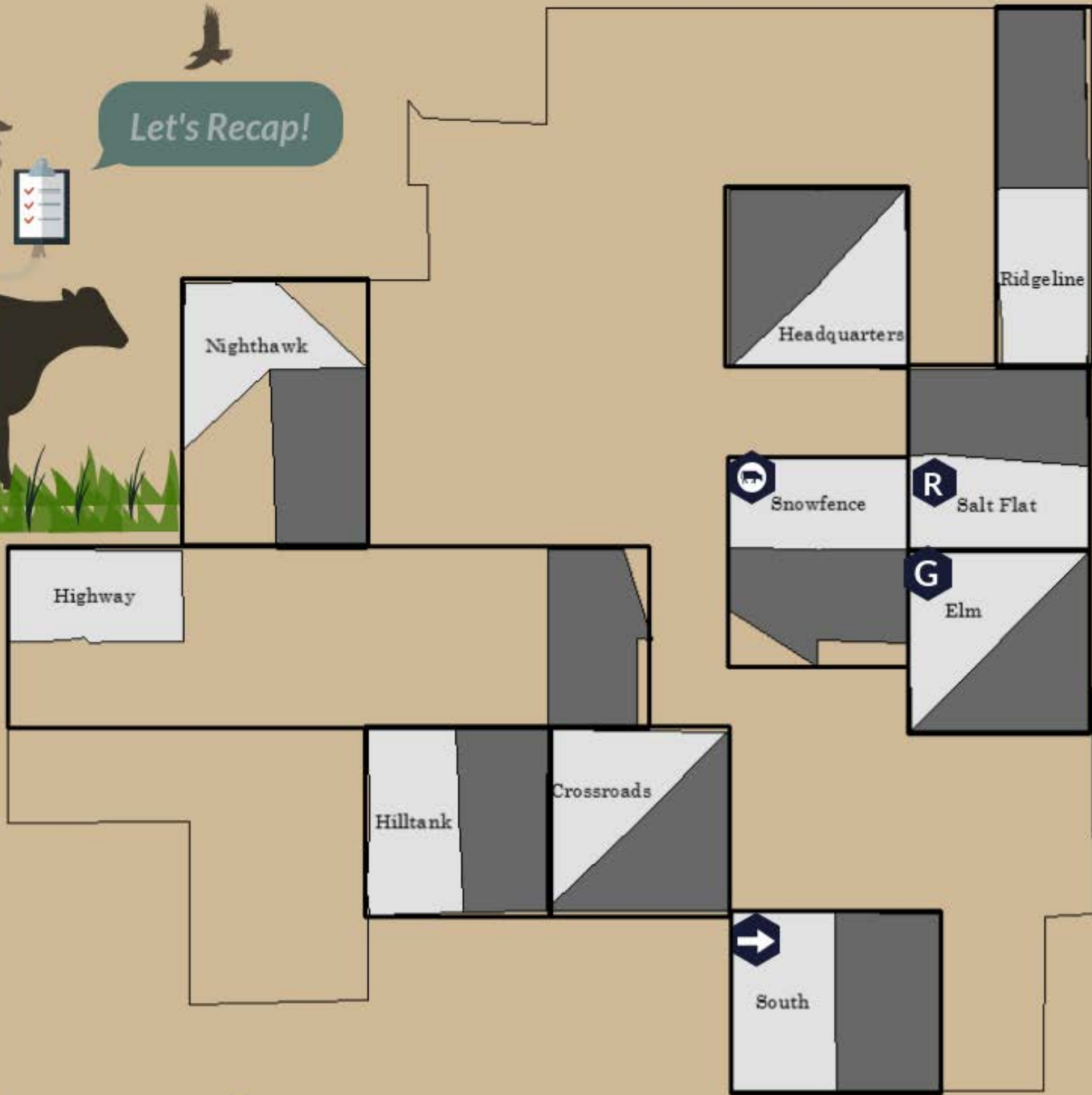


Greetings CARMers!

The steers are using the scale in a way I never would have imagined. The new equipment is potentially the most expensive nap-pods on the market.



Let's Recap!



Herd



Next



Grazed



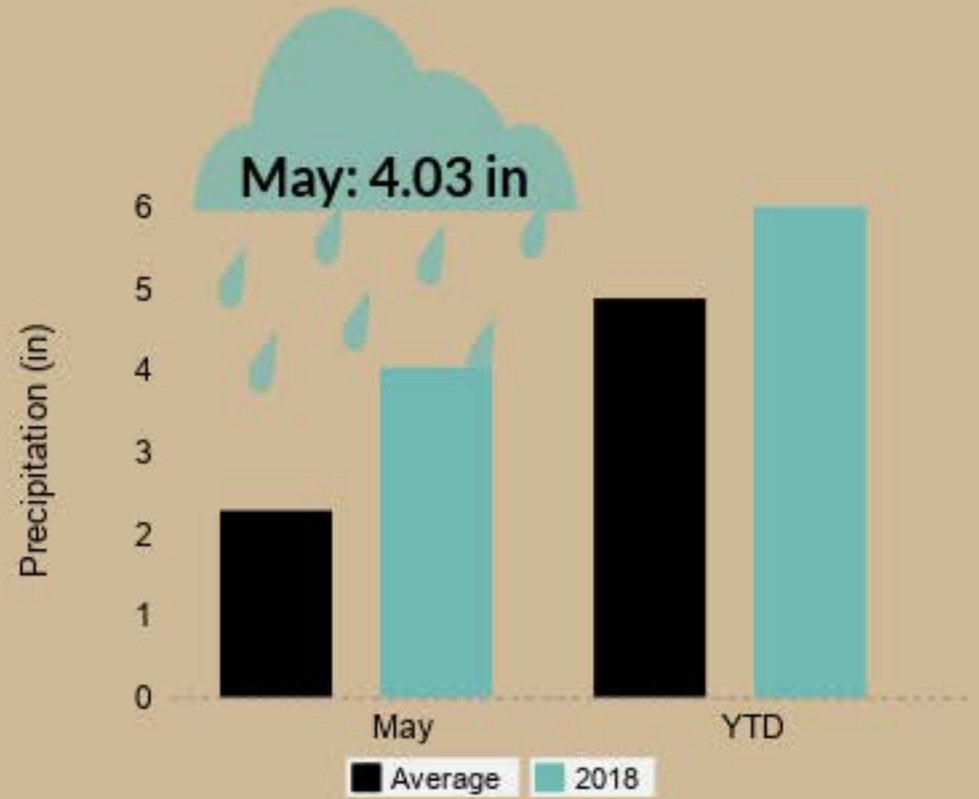
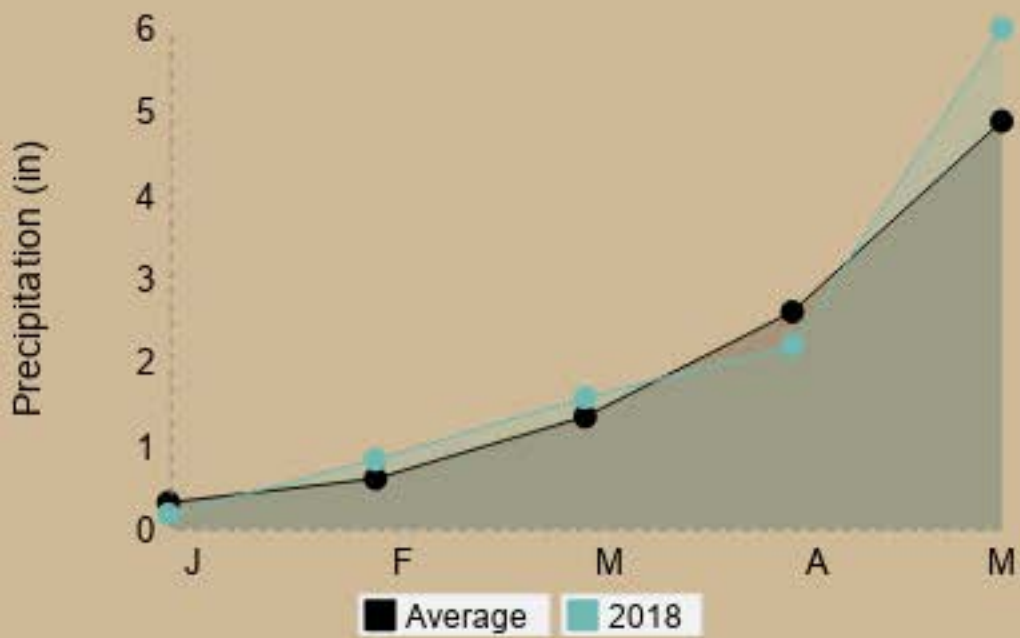
Rest

### Snowfence Stats:

- Sandy Soils
- Cool Season Dominated
- Veg. Threshold 550lbs/acre
- Burned in 2017 (80 acres)

# Highlights of Happenings

## Rainfall Totals



## Drought Outlook

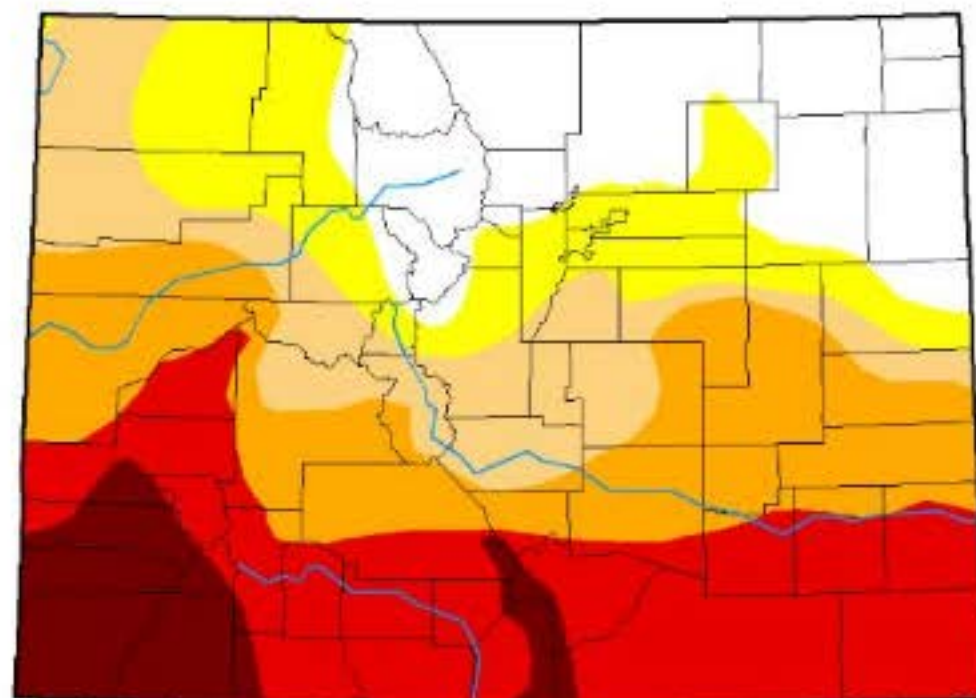
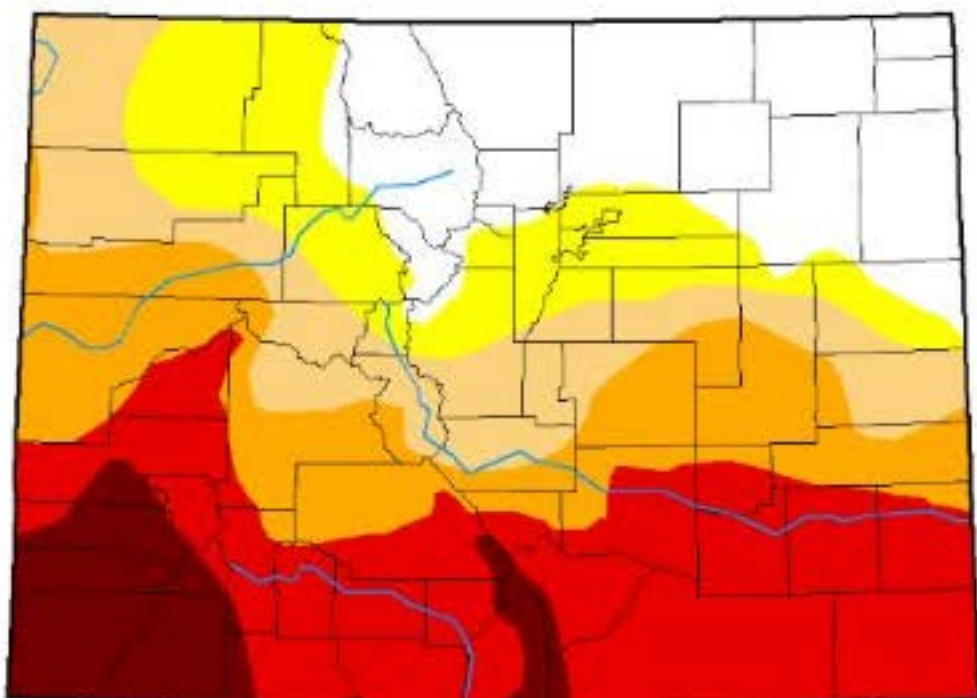
What's in the Grass-Cast?



### Drought Classification

- None
- D0 (Abnormally Dry)
- D1 (Moderate Drought)
- D2 (Severe Drought)
- D3 (Extreme Drought)
- D4 (Exceptional Drought)

### Two Week Comparison



# Soil Moisture Distribution

## What's in our cup?

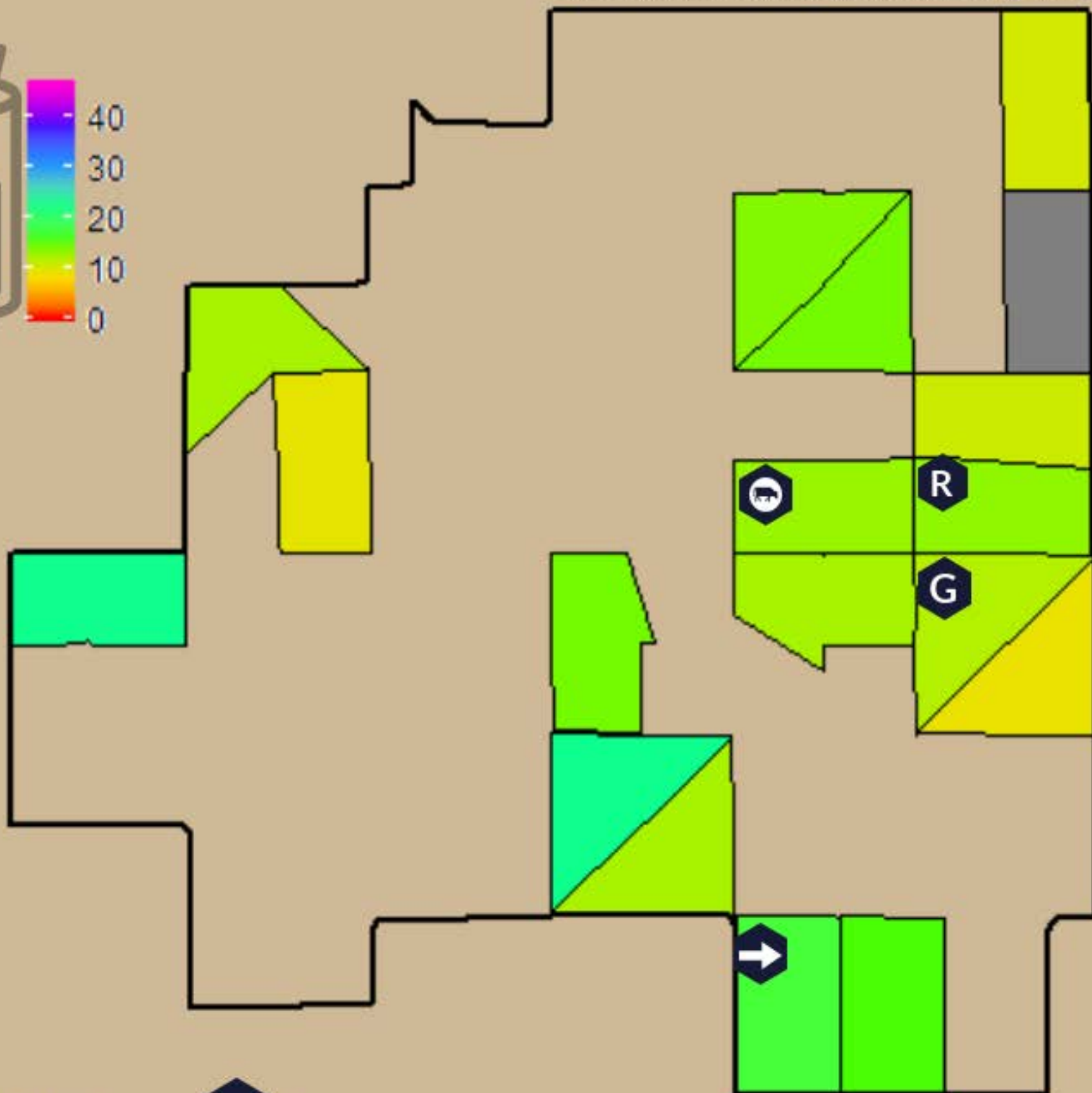
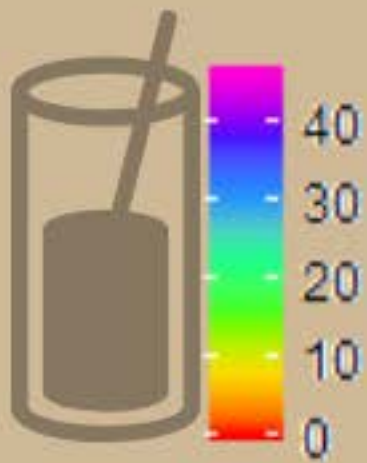
Just a heads up, we're still installing the telecom network for the soil moisture & precip maps.

### Current Soil Moisture

2018-05-13

The map below is a reminder of where we were two weeks ago.

We should be back up and running shortly!



- Herd
- Next
- Grazed
- Rest

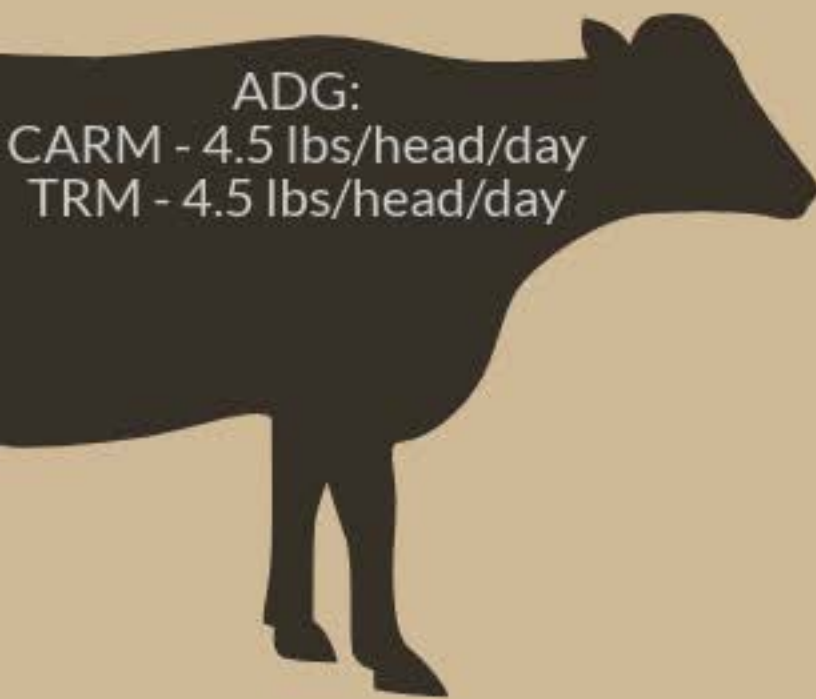
## Available Forage



**NOTE:** Empty (E) is set at our pasture threshold of 450lbs/acre NOT Zero lbs/acre.



## Entry & Exit Stats



Elm Exit Forage 907 lbs/acre

Snowfence Entry Forage: 998 lbs/acre

Elm was a good pasture to start the season with as shown in the Average Daily Gains (ADG).

**Note:** ADG after 14 days grazed and only sampled 13% of CARM

## Cowboy Report

- ✓ Content
- ✓ Grazing large groups
- ✓ Let'm stay





**Tech Note:**

Vegetation crew is busy with bird surveys.  
Cattle crew is busy prepping for the new stock tank.

*This week*



*Last week*





## Up Coming!

- LTGI Weights - June 7th
- Data Day - June 27th
- New stock tank
- CARM Vegetation Monitoring

On behalf of the USDA-ARS  
Rangeland Resources & Systems Research Unit,  
I thank you all  
for your continued participation  
in this project.

Happy Trails!



For detailed precipitation  
data, maps, last year's  
updates, Scientist bios, and  
CARM documents, see our  
website:



ALL access data!