



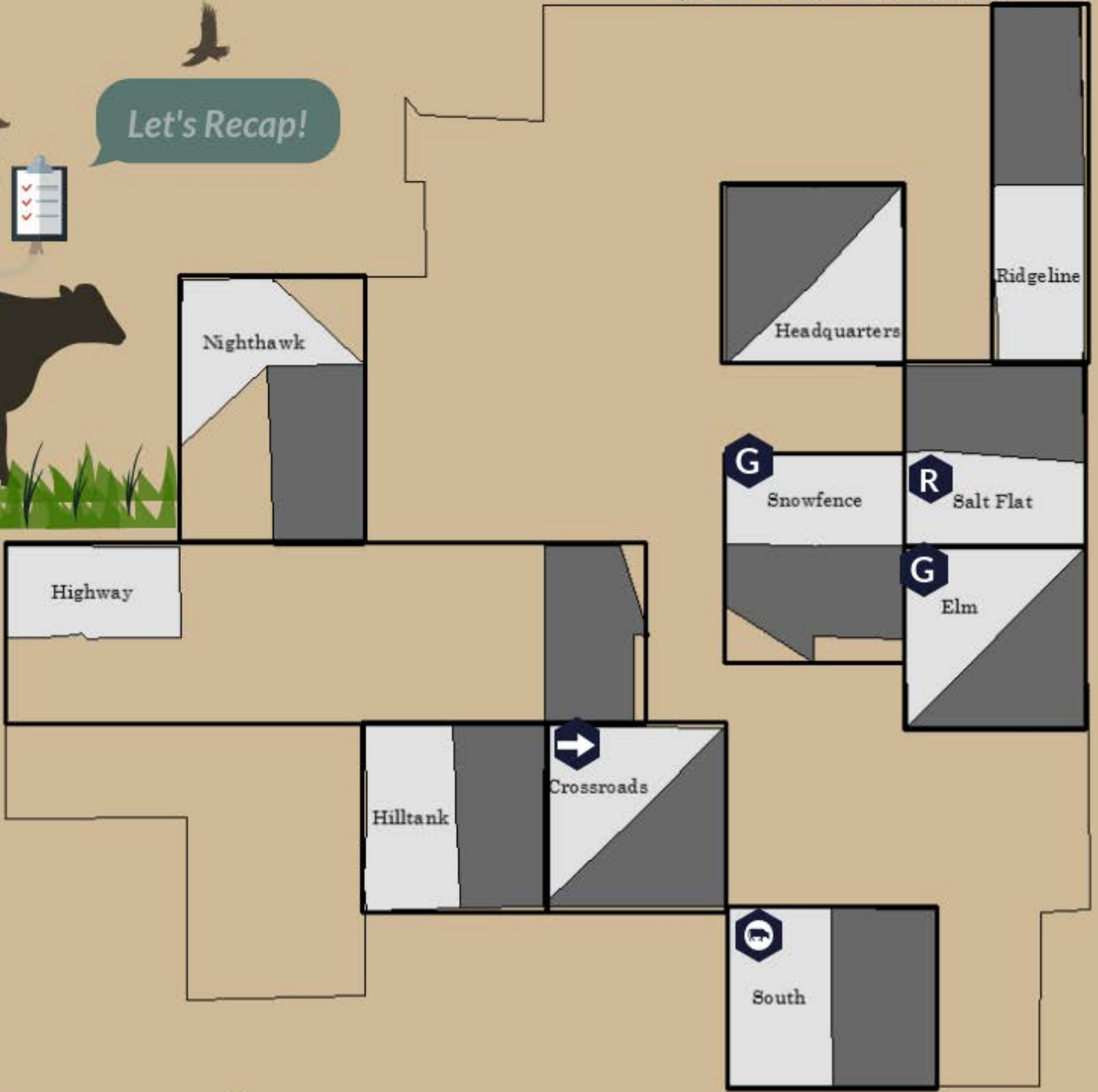
Greetings CARMers!

Mid-summer check-in, how are you feeling about the season so far?

If you have any special requests, thoughts or comments, please send them our way!



Let's Recap!



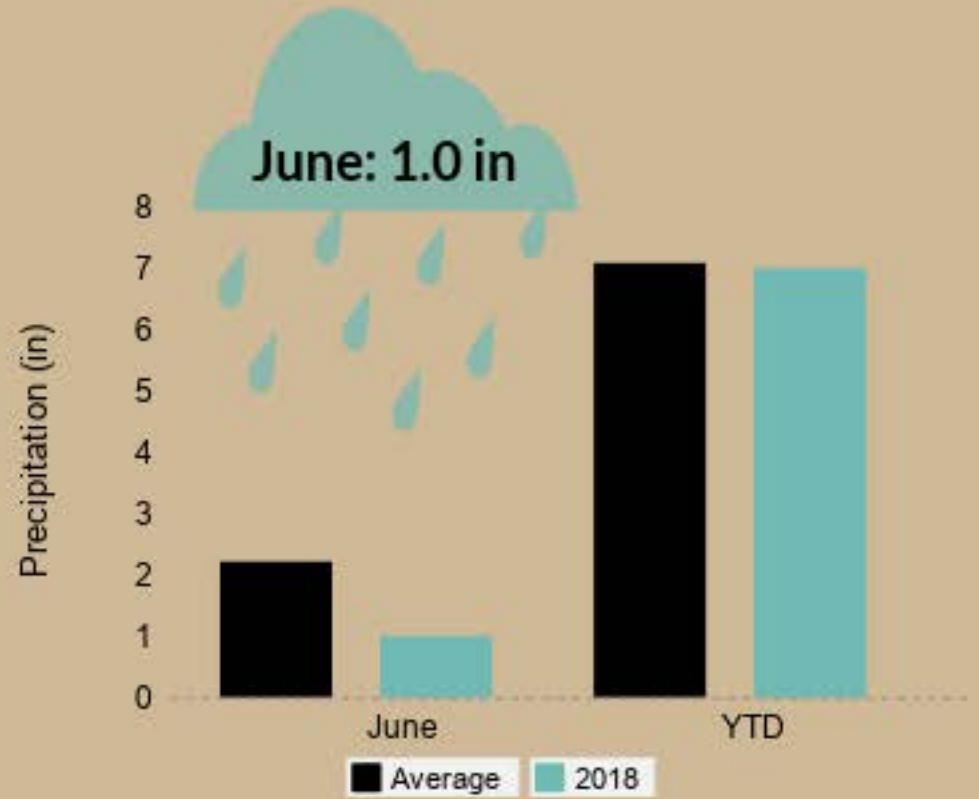
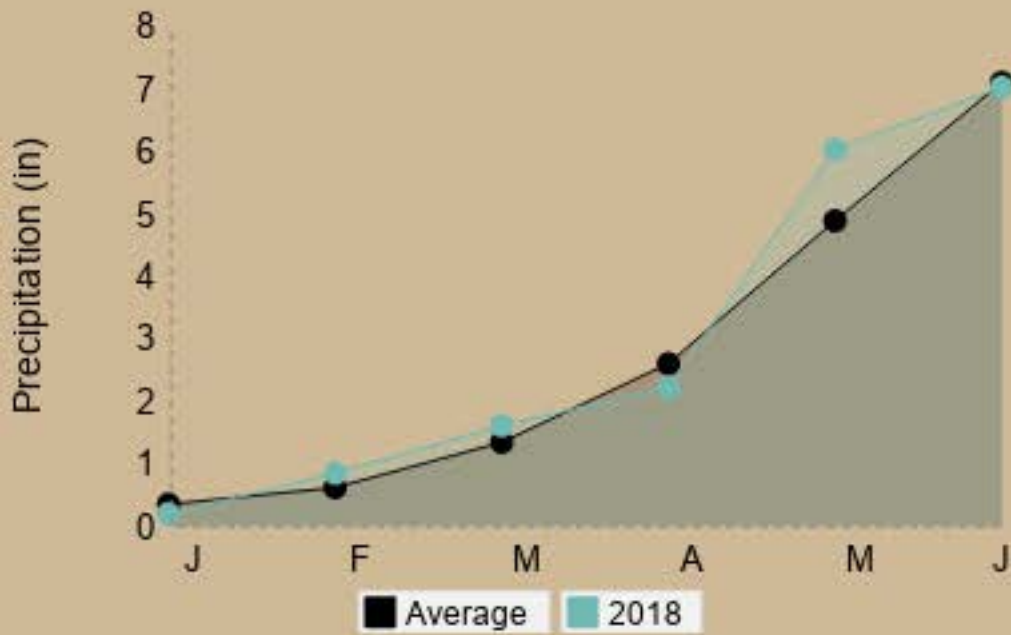
- Herd
- Next
- Grazed
- Rest

Crossroad Stats:

- Loamy/Sandy Mix Soils
- Mix Cool & Warm Season
- Veg. Threshold 500lbs/acre

Highlights of Happenings

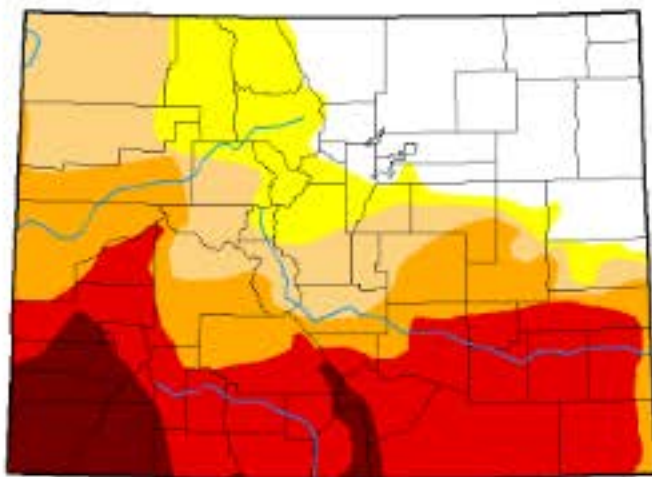
Rainfall Totals



Grass-Cast

U.S. Drought Monitor Colorado

June 19, 2018
(Released Thursday, Jun. 21, 2018)
11:15 a.m. EDT



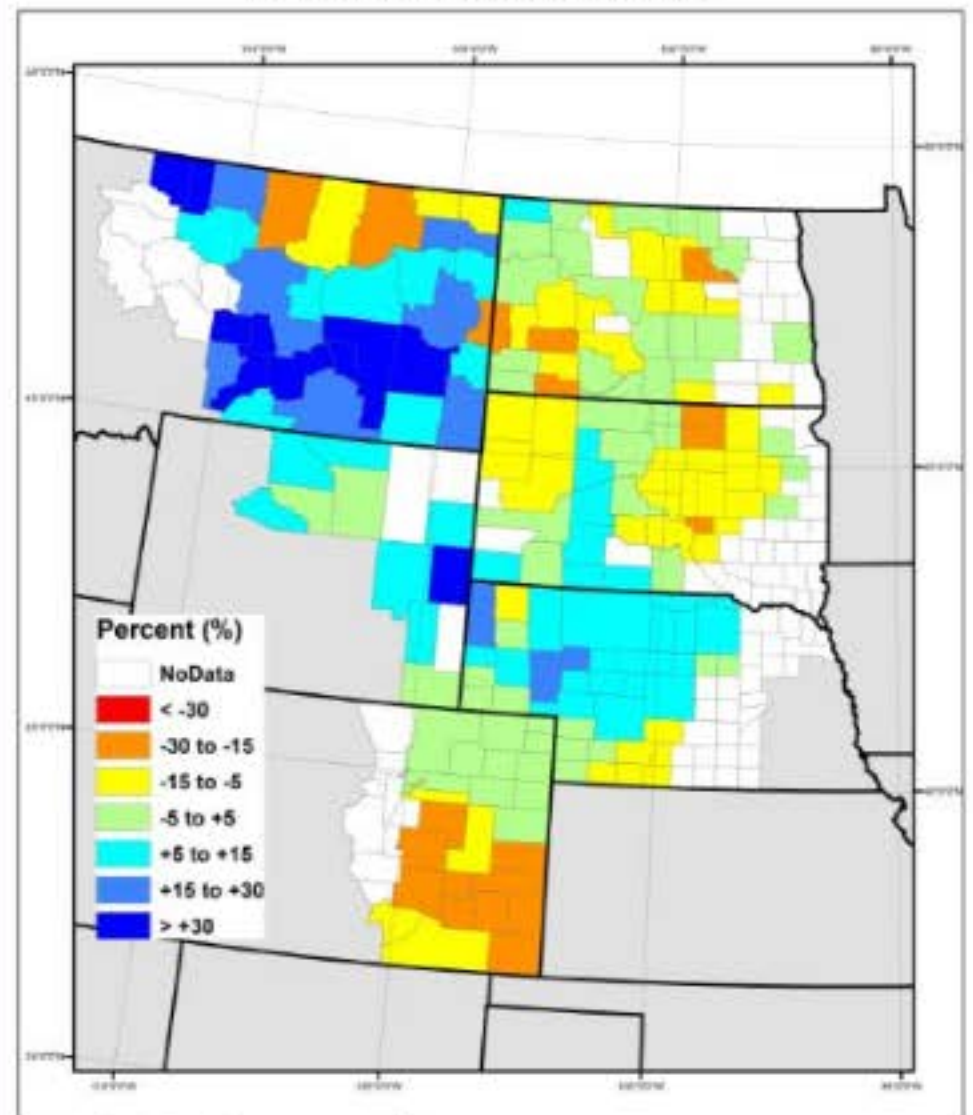
- Intensity:**
- D0 Abnormally Dry
 - D1 Moderate Drought
 - D2 Severe Drought
 - D3 Extreme Drought
 - D4 Exceptional Drought

The Drought Monitor focuses on broad scale conditions. Local conditions may vary. See accompanying text summary for forecast station lists.

Author:
Brian Fuchs
National Drought Mitigation Center

USDA, NWS, NOAA, NCEP
<http://droughtmonitor.unl.edu/>

Percent Change in 2018 Predicted ANPP Compared to 1982-2015 Mean ANPP Assuming Normal June-July Precipitation



- Percent (%)**
- NoData
 - < -30
 - 30 to -15
 - 15 to -5
 - 5 to +5
 - +5 to +15
 - +15 to +30
 - > +30

Data are from 6/18/2018

Source: Brian Fuchs, NWS, NOAA, NCEP
Date: 6/18/2018
Map produced by NWS, NOAA

Drought Monitor

Grass-Cast



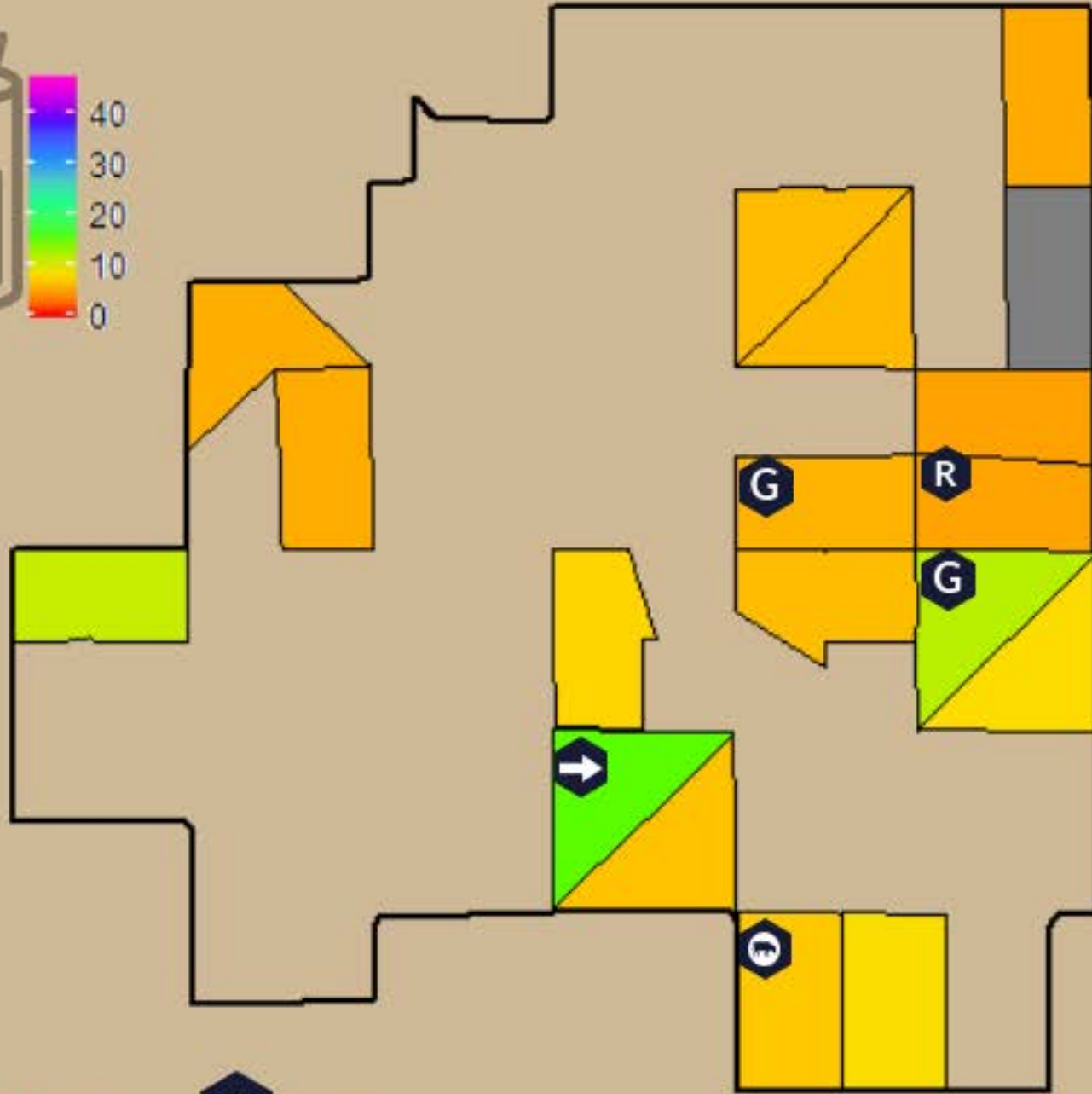
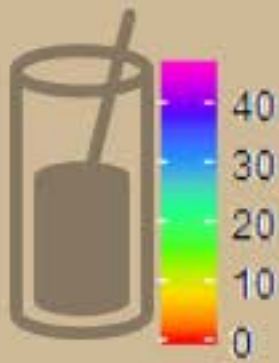
Soil Moisture Distribution

What's in our cup?

Look for an updated graph next week!

Current Soil Moisture

2018-06-17



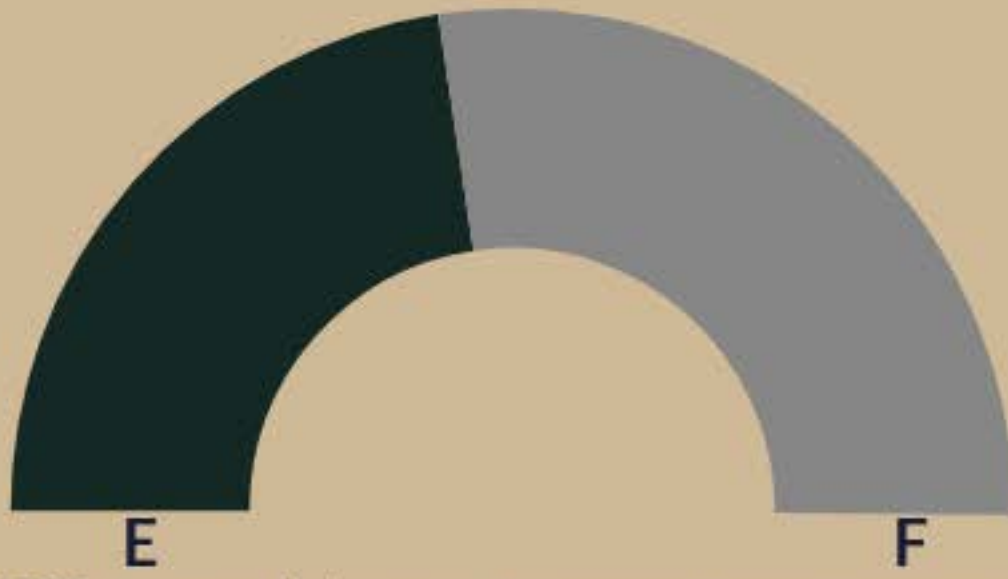
- Herd
- Next
- Grazed
- Rest

Cowboy Report

Happy, overall good health (a couple foot rots & pink eyes), but nothing major to note.



South Forage



NOTE: Empty (E) is set at our pasture threshold of 400 lbs/acre NOT Zero lbs/acre.

'Tis the season for Blue Grama & Buffalo Grass.

*The volume may measure less, but the
vegetation is nice & green.*



Crossroad Forage





Tech Note:

- The fescue & squirrel tail are in full senescence.

This week



Last week



*Desktop
Field View*



Up & Coming

- Data Day - June 27th
- CARM pedometer & gps collar download - June 28th
- CARM to Crossroads - June 28th
- Fecal Sampling
- LTGI Weights - June 5th
- Mover herds rotate - June 5th

On behalf of the USDA-ARS
Rangeland Resources & Systems Research Unit,
I thank you all
for your continued participation
in this project.

Happy Trails!



For detailed precipitation
data, maps, last year's
updates, Scientist bios, and
CARM documents, see our
website:



ALL access data!