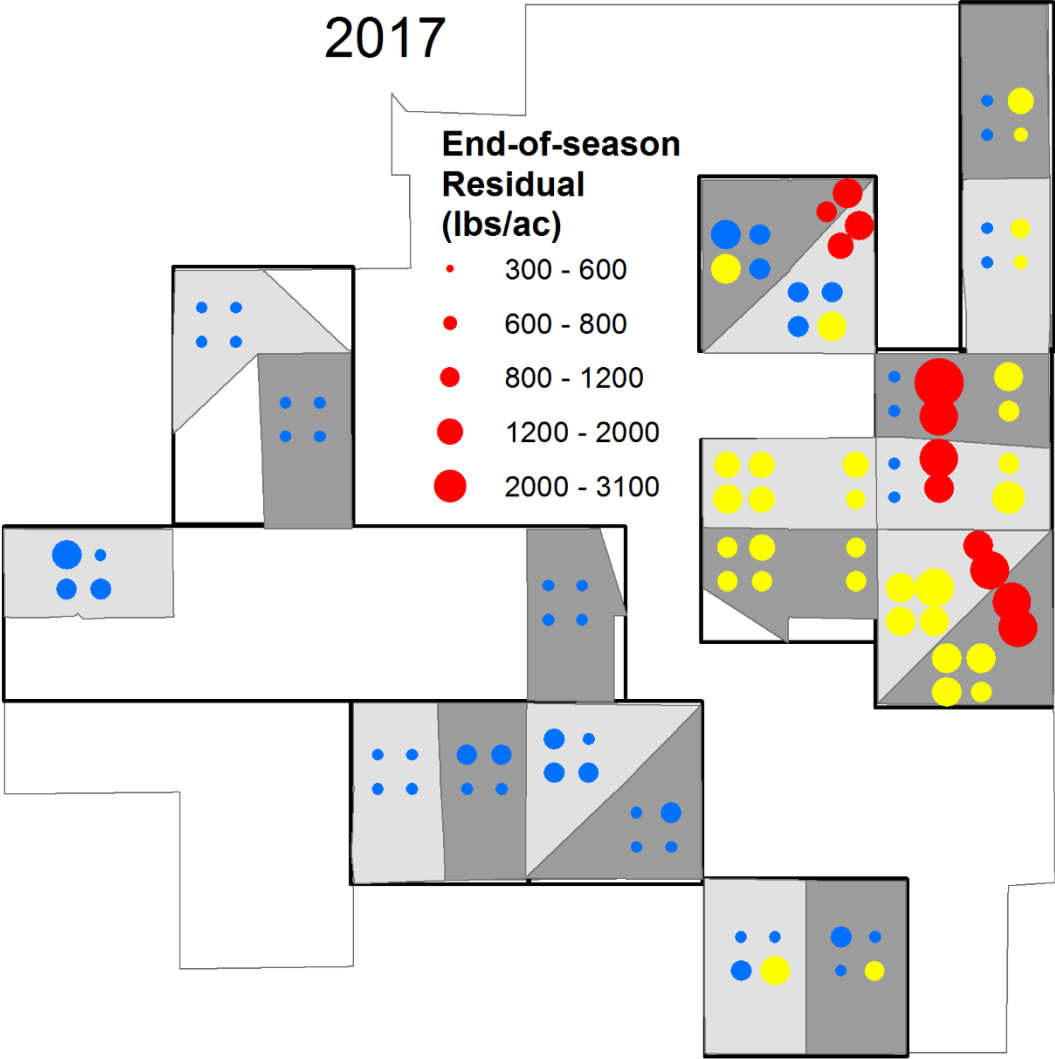


# Residual Biomass at End of Grazing Season



## October Residual Forage, lbs/ac

### Upland Ecosites

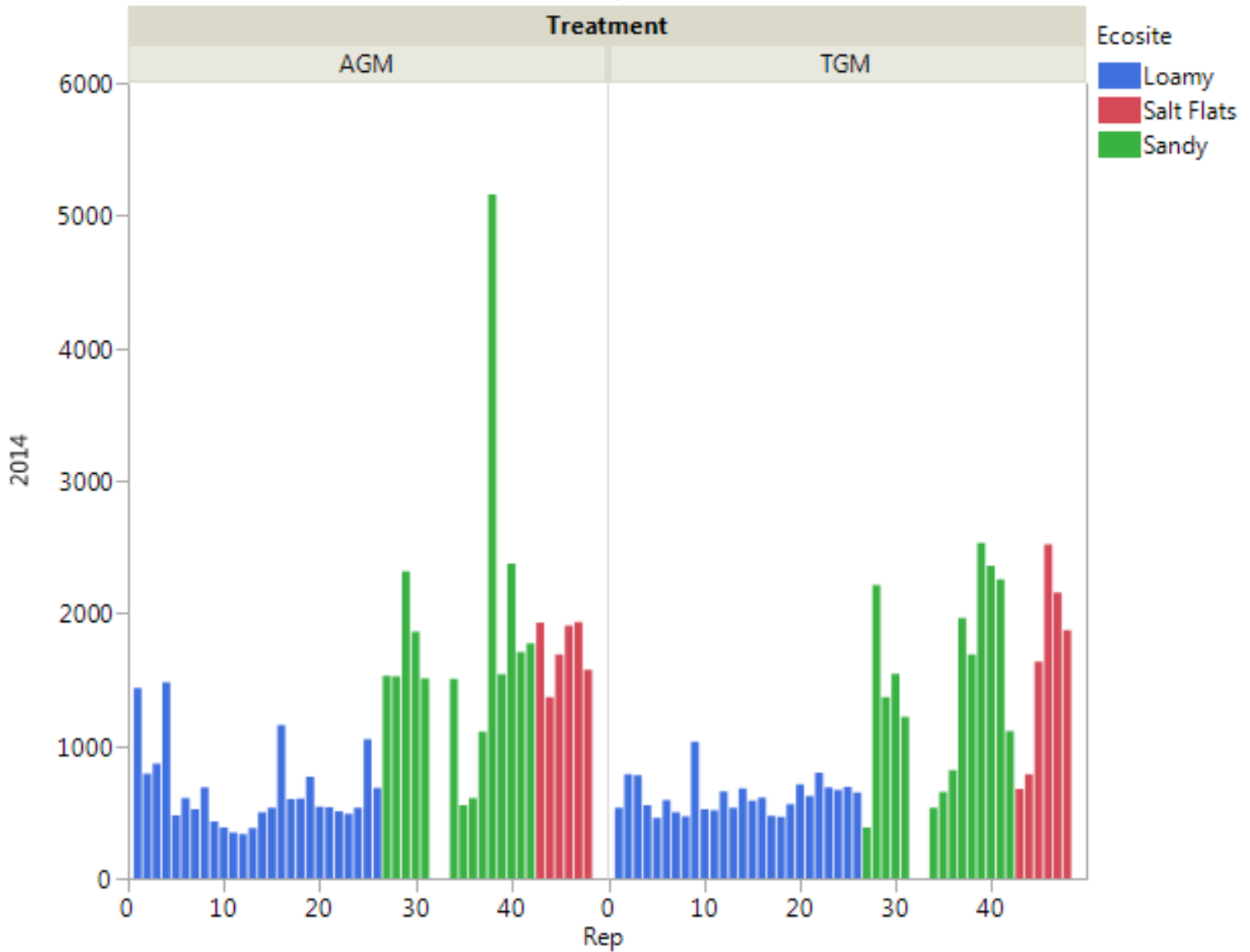
Name	AGM	TGM	Notes on AGM
Nighthawk	516	549	Grazed Early
Highway	717	544	Grazed
Hilltank	342	588	Grazed
Crossroads	593	582	Grazed
South	748	552	Grazed Late
Snowfence	636	618	Grazed Early
Headquarters	699	789	Grazed Early
Ridgeline	527	606	Grazed Late
Saltflat	587	682	Grazed Late
Elm	1029	788	Rested

### Saltflat Ecosites

	AGM	TGM	Notes on AGM
Headquarters	954	852	Grazed Early
Saltflat	1184	2052	Grazed Late
Elm	1398	1344	Rested

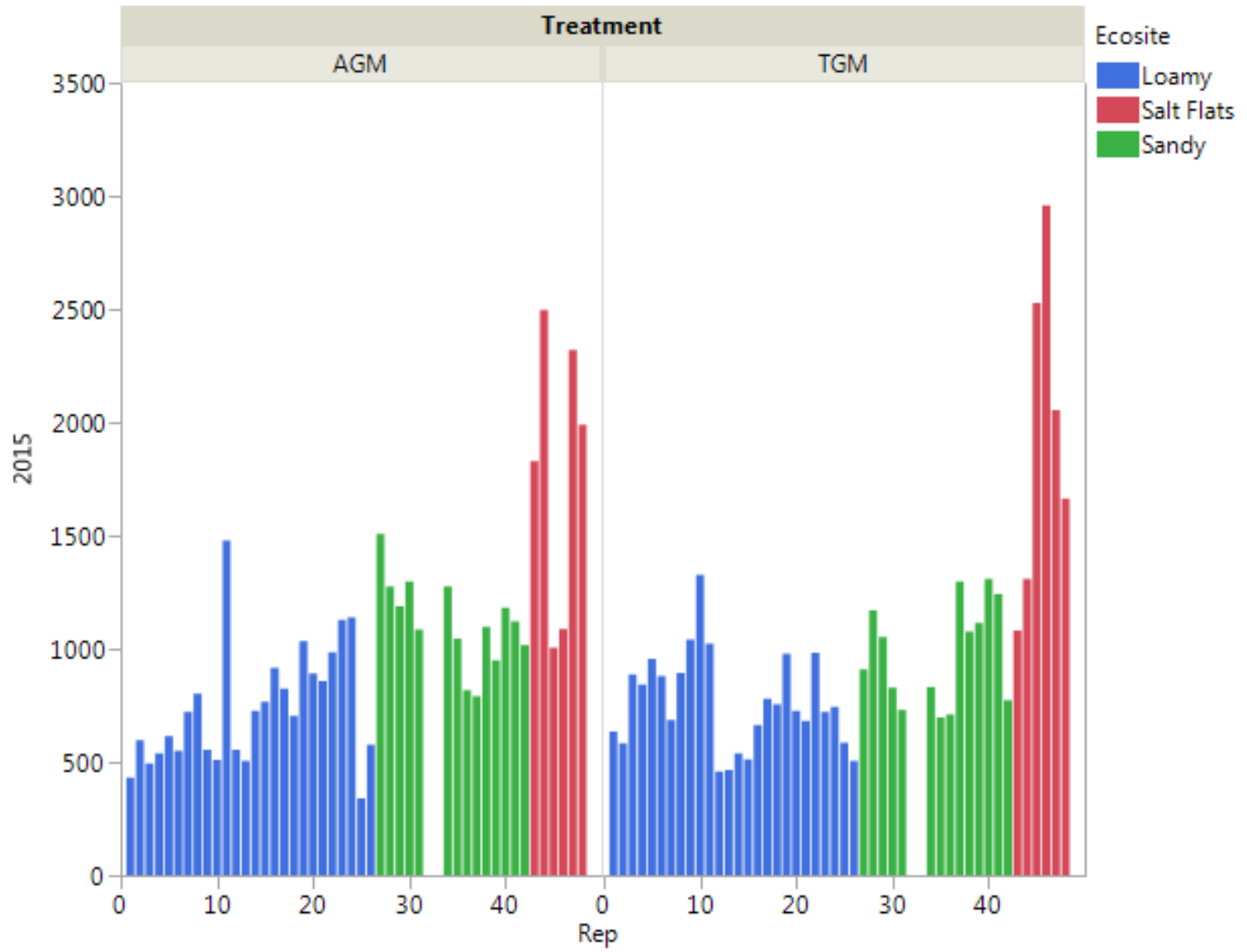
# 2014 Residual

	Among-Plot Variance		
	AGM	TGM	AGM:TGM
Loamy	94544	17315	5.5
Sandy	1210812	518260	2.3
Salt Flats	54120	549026	0.1



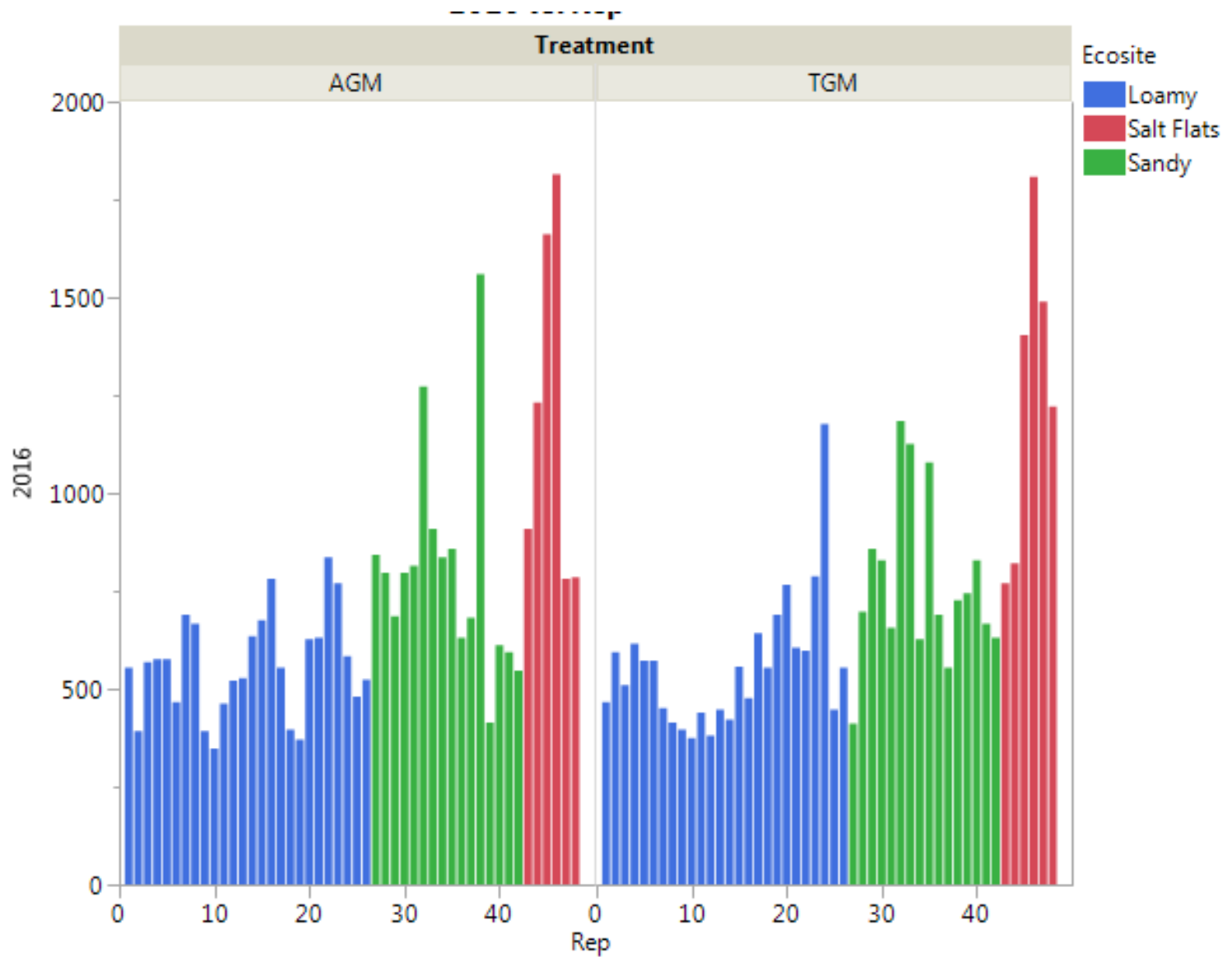
# 2015 Residual

Among-Plot Variance			
	AGM	TGM	AGM:TGM
Loamy	68608	44610	1.5
Sandy	37289	50383	0.7
Salt Flats	386475	521188	0.7



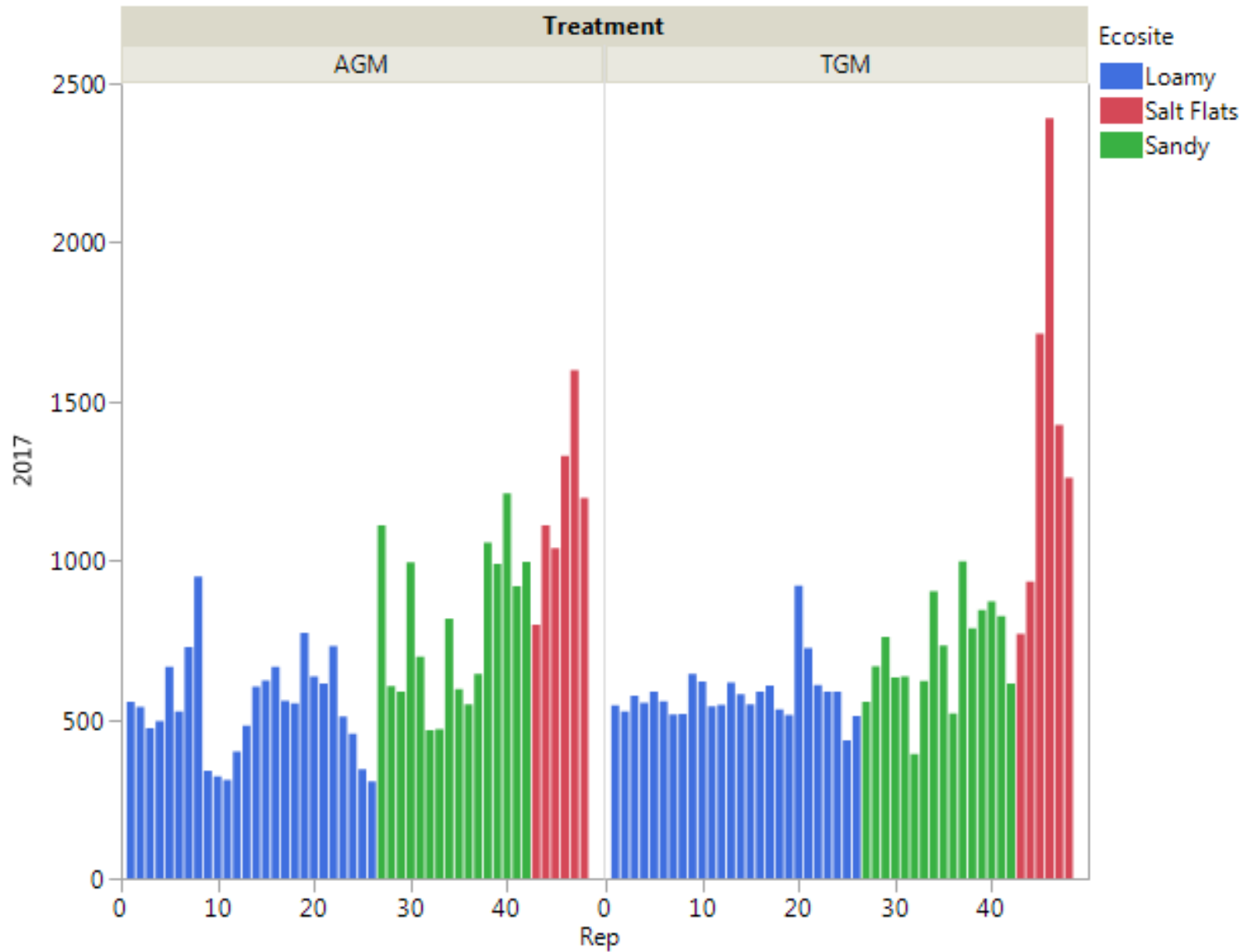
# 2016 Residual

Among-Plot Variance			
	AGM	TGM	AGM:TGM
Loamy	16772	28431	0.6
Sandy	77561	44101	1.8
Salt Flats	204901	161384	1.3



# 2017 Residual

	Among-Plot Variance		
	AGM	TGM	AGM:TGM
Loamy	24992	7817	3.2
Sandy	60133	25255	2.4
Salt Flats	73700	342447	0.2



### Among-Plot Variance: Loamy and Sandy Ecosites (Uplands)

Year	AGM	TGM	AGM:TGM Ratio
2014	761209	354246	2.15
2015	89655	56476	1.59
2016	52688	44233	1.19
2017	52310	18069	2.89

# Residual Biomass at End of Grazing Season

