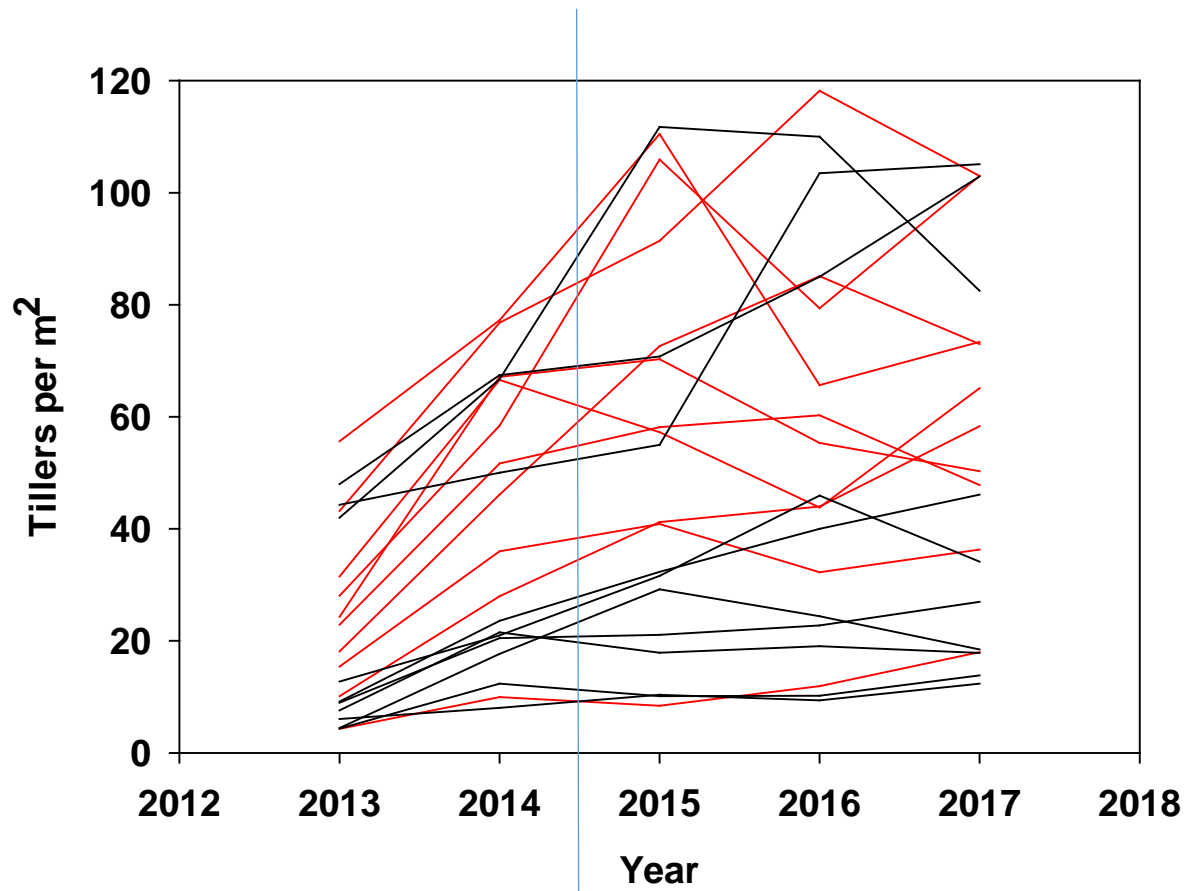


# Western Wheatgrass Density (Tillers per m<sup>2</sup>)

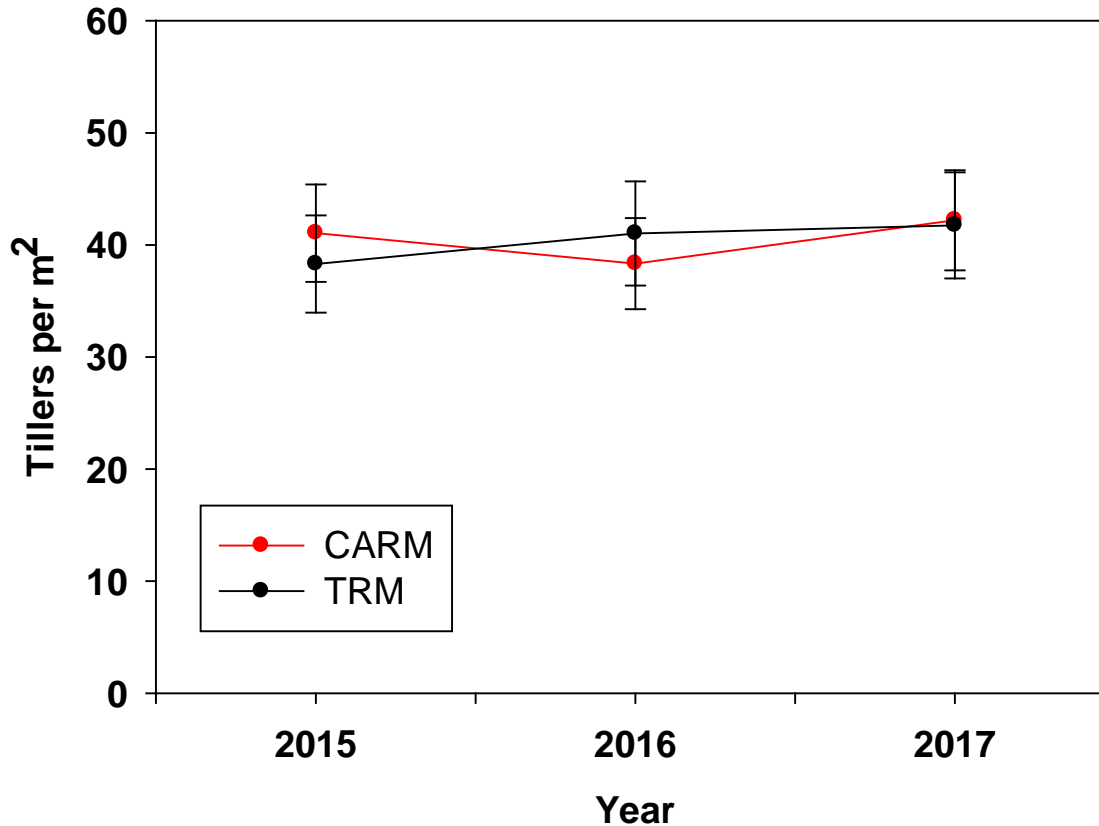


Red Lines = CARM Pastures

Black Lines = TRM Pastures

# Western Wheatgrass Density

(Post-treatment Tillers per m<sup>2</sup>)



Statistical model that:

- 1) Accounts for the paired pasture design (blocks)
- 2) Accounts for pre-treatment WW levels in each pasture (mean of 2013 and 2014)
- 3) Normalizes data to meet statistical assumptions using natural log transform

2013

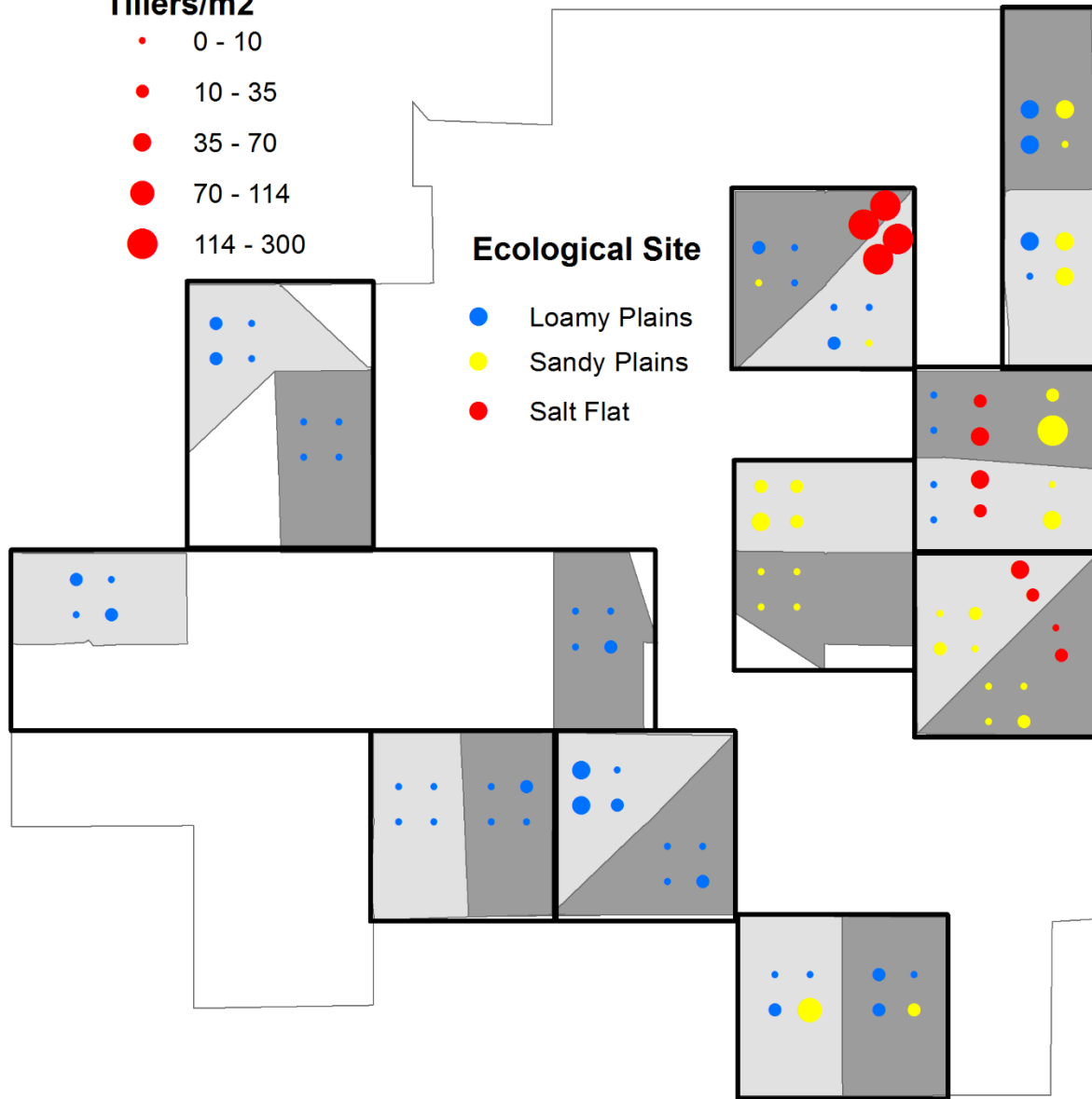
**Western Wheatgrass**

**Tillers/m<sup>2</sup>**

- 0 - 10
- 10 - 35
- 35 - 70
- 70 - 114
- 114 - 300

**Ecological Site**

- Loamy Plains
- Sandy Plains
- Salt Flat



# Western Wheatgrass

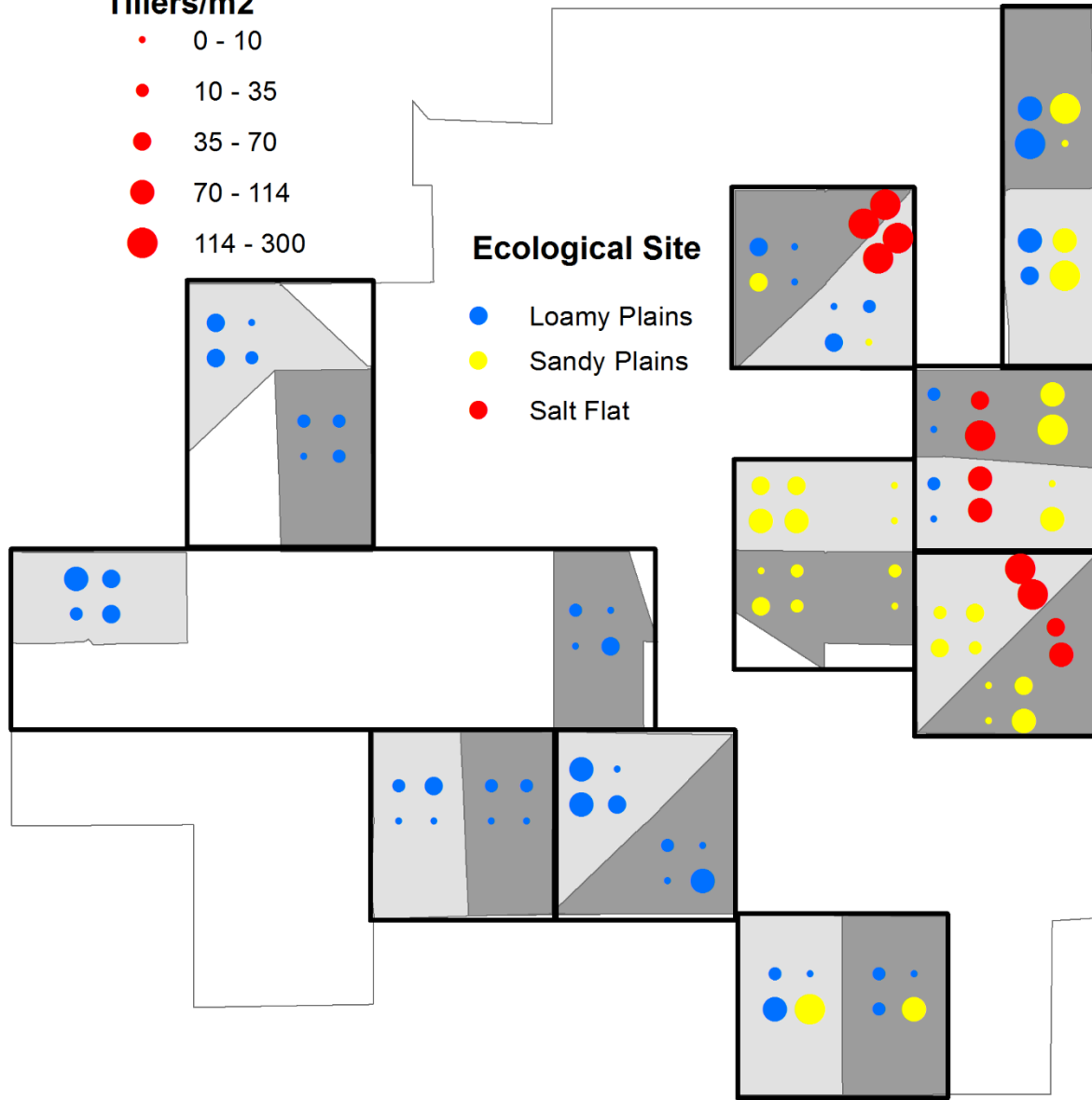
## Tillers/m2

- 0 - 10
- 10 - 35
- 35 - 70
- 70 - 114
- 114 - 300

## Ecological Site

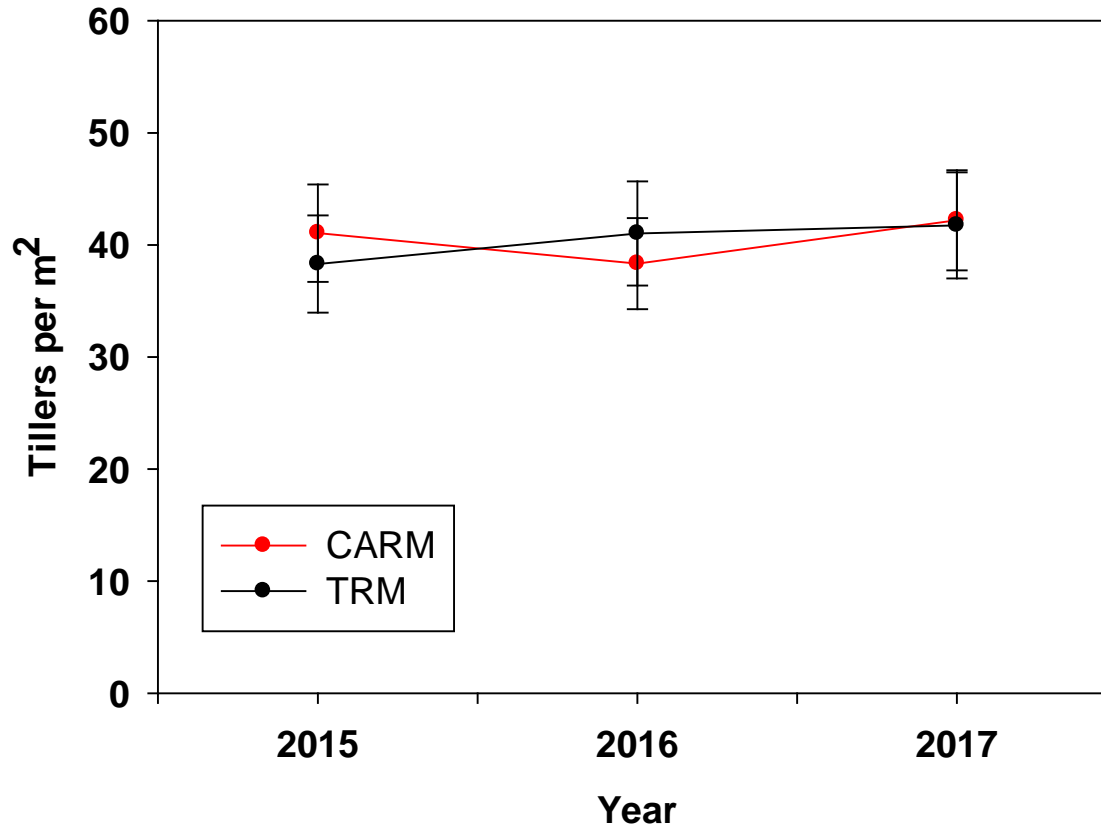
- Loamy Plains
- Sandy Plains
- Salt Flat

2017



# Western Wheatgrass Density

(Post-treatment Tillers per m<sup>2</sup>)



Statistical model that:

- 1) Accounts for the paired pasture design (blocks)
- 2) Accounts for pre-treatment WW levels in each pasture (mean of 2013 and 2014)
- 3) Normalizes data to meet statistical assumptions using natural log transform