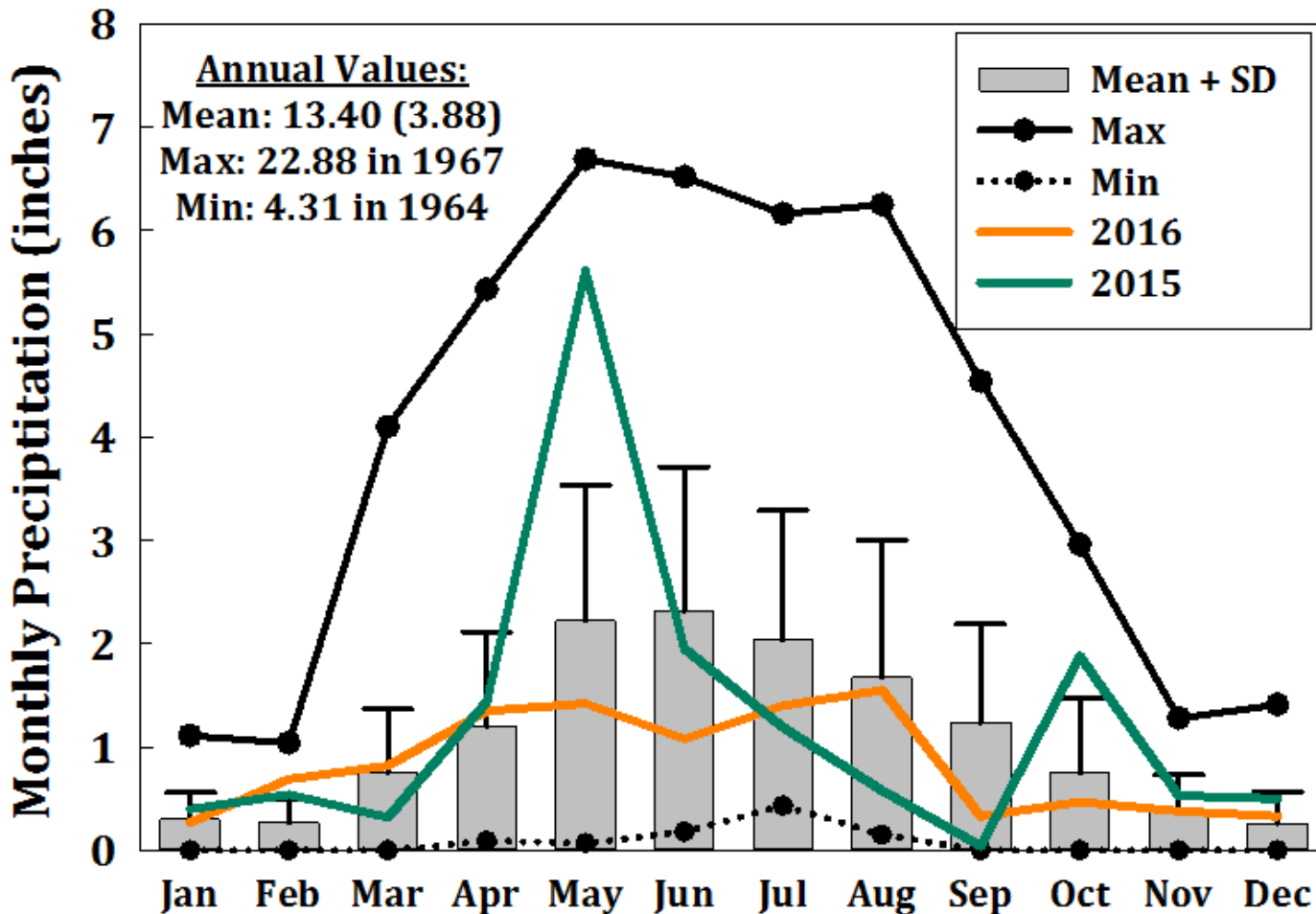


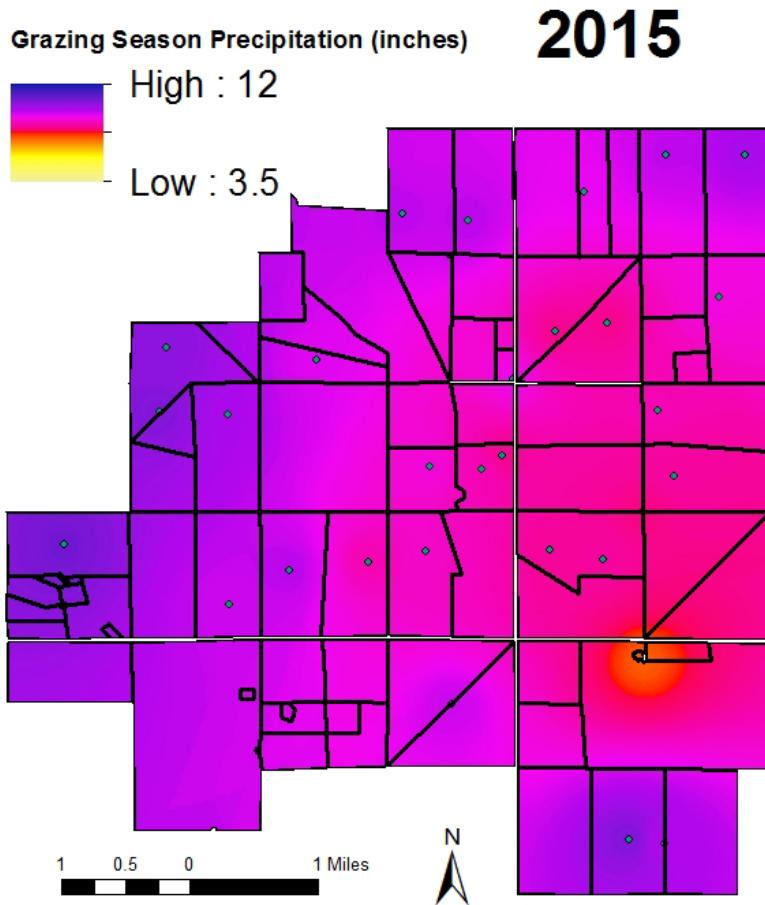
2016 Precipitation

Monthly CPER Precipitation

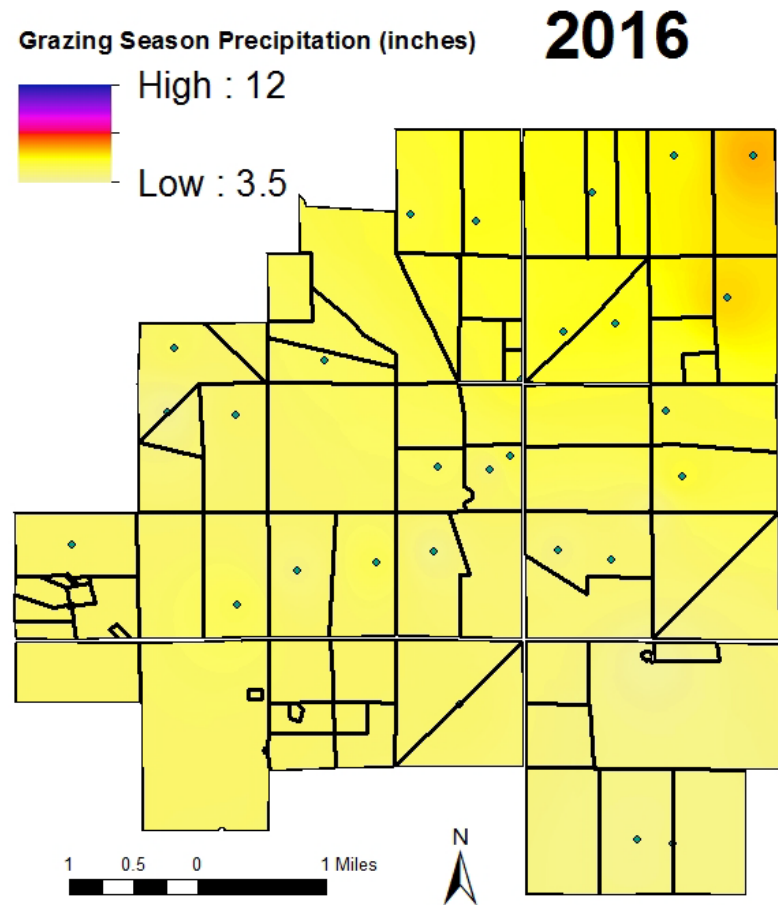


Total 2016 Precipitation: 10.09 inches

Spatial Variation in Precipitation



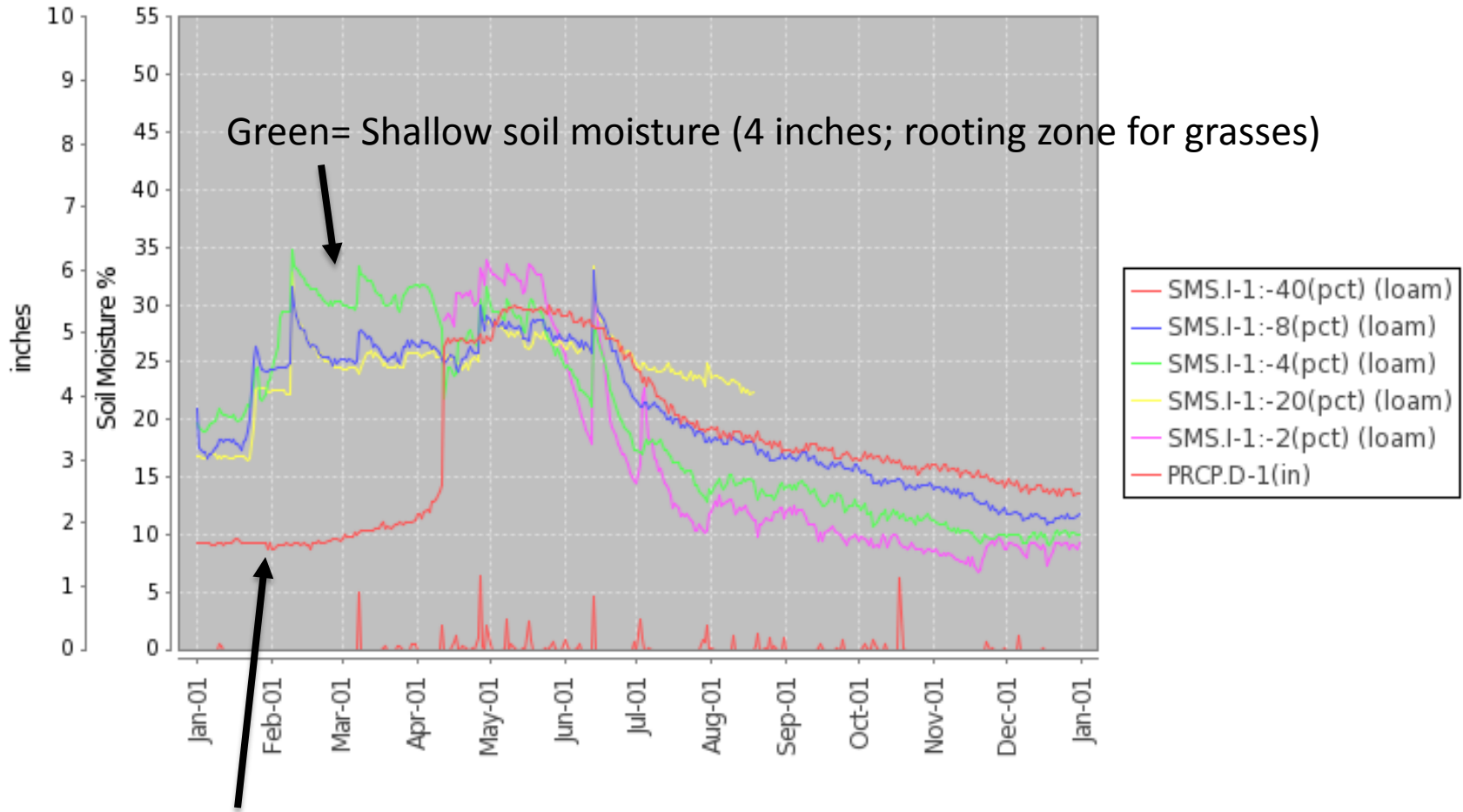
Average = 9.3 inches (May-Sept)



Average = 4.8 inches (May-Sept)

2016 Soil Water

Station (2017) YEAR=2016 (Daily) NRCS National Water and Climate Center - Provisional Data - subject to revision Mon Jan 02 13:15:30 GMT-08:00 2017



Red = Deep soil moisture (40 inches)