

Remote Sensing and Complex Terrain

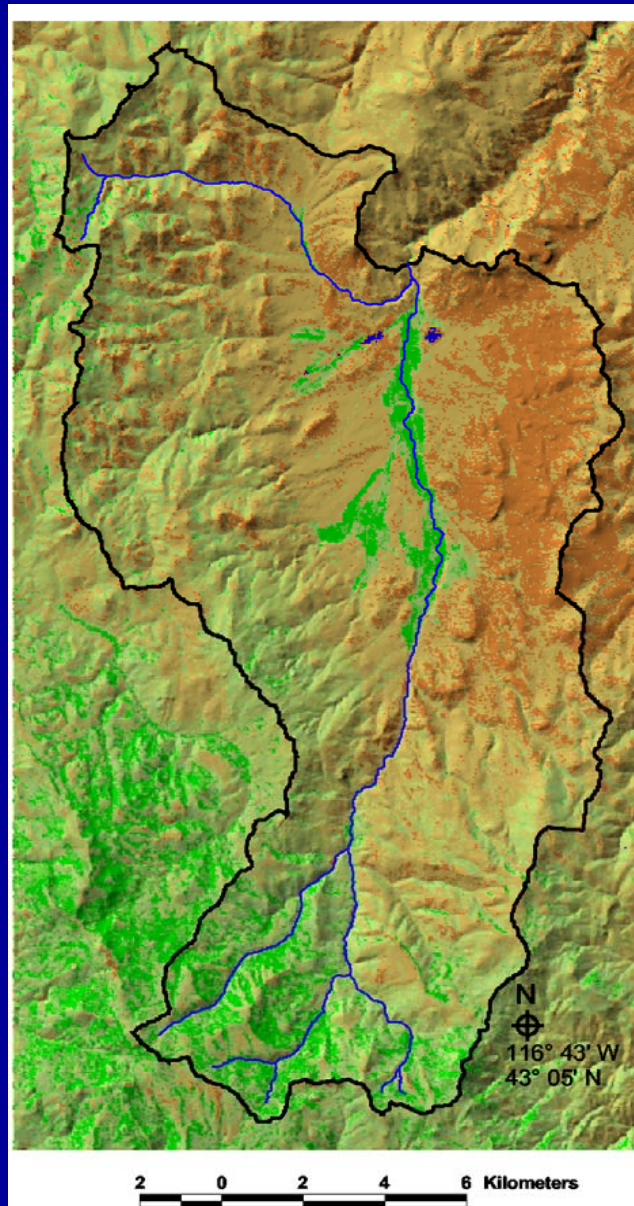
Great Basin water, energy and carbon fluxes

Potential Importance of Remote Sensing in Intermountain Region

- Consider the vast extent of complex terrain in the intermountain west.
- Sparse instrument network
- High degree of variability
- Impact on water resources, ecohydrology
- How else can extensive data be collected repeatedly?

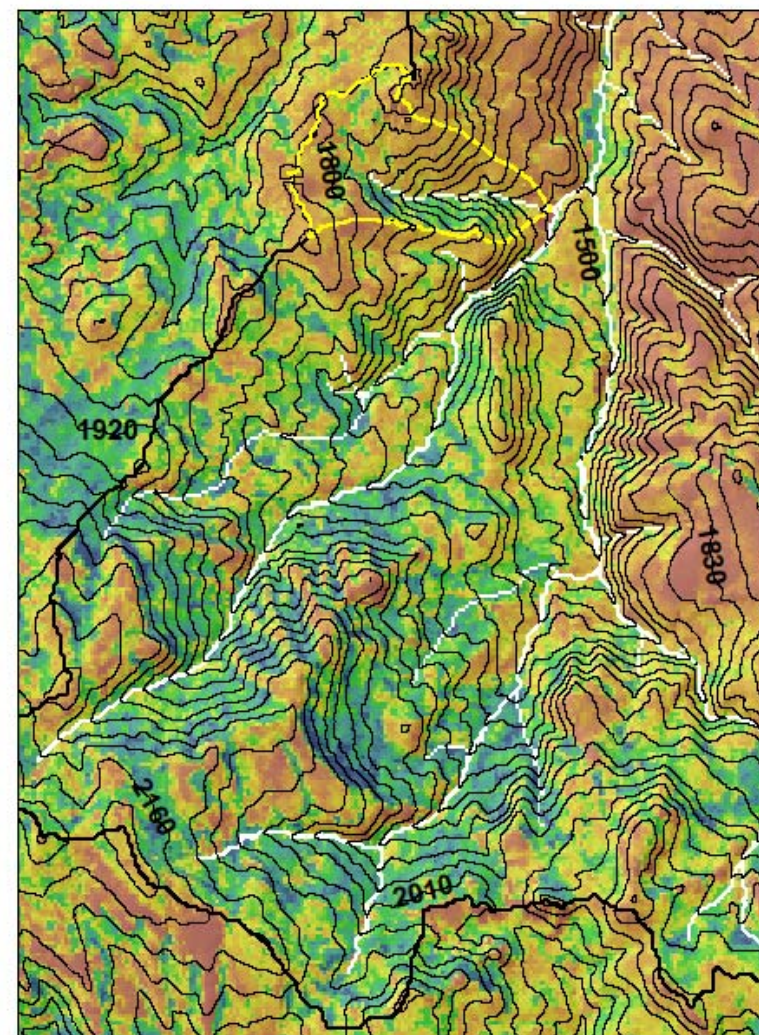
- In the region, supply and demand for water is critical
- To be useful for monitoring conditions, testing and/or parameterizing models, remote sensing data needs to be understood at the scale that water variability occurs.



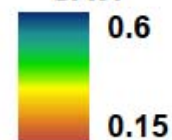


Savi

- Water
- < 0.13 Low Veg Cover
- 0.14 - 0.21
- 0.22 - 0.29
- 0.30 - 0.37
- 0.38 - 0.45
- > 0.45 High Veg Cover
- Perennial streams



SAVI



0 1 2 Kilometers

30m contour interval



