

Ecosphere

Assessing Precipitation, Evapotranspiration, and NDVI as Controls of U.S. Great Plains Plant Production

Maosi Chen, William J. Parton, Melannie D. Hartman, Stephen J. Del Grosso, William K. Smith, Alan K. Knapp, Susan Lutz, Justin D. Derner, Compton J. Tucker, Dennis S. Ojima, Jerry D. Volesky, Mitchell B. Stephenson, Walter H. Schacht, Wei Gao

Appendix S3. Comparison of simulated and observed water variables and their correlations with ANPP observations at the site level

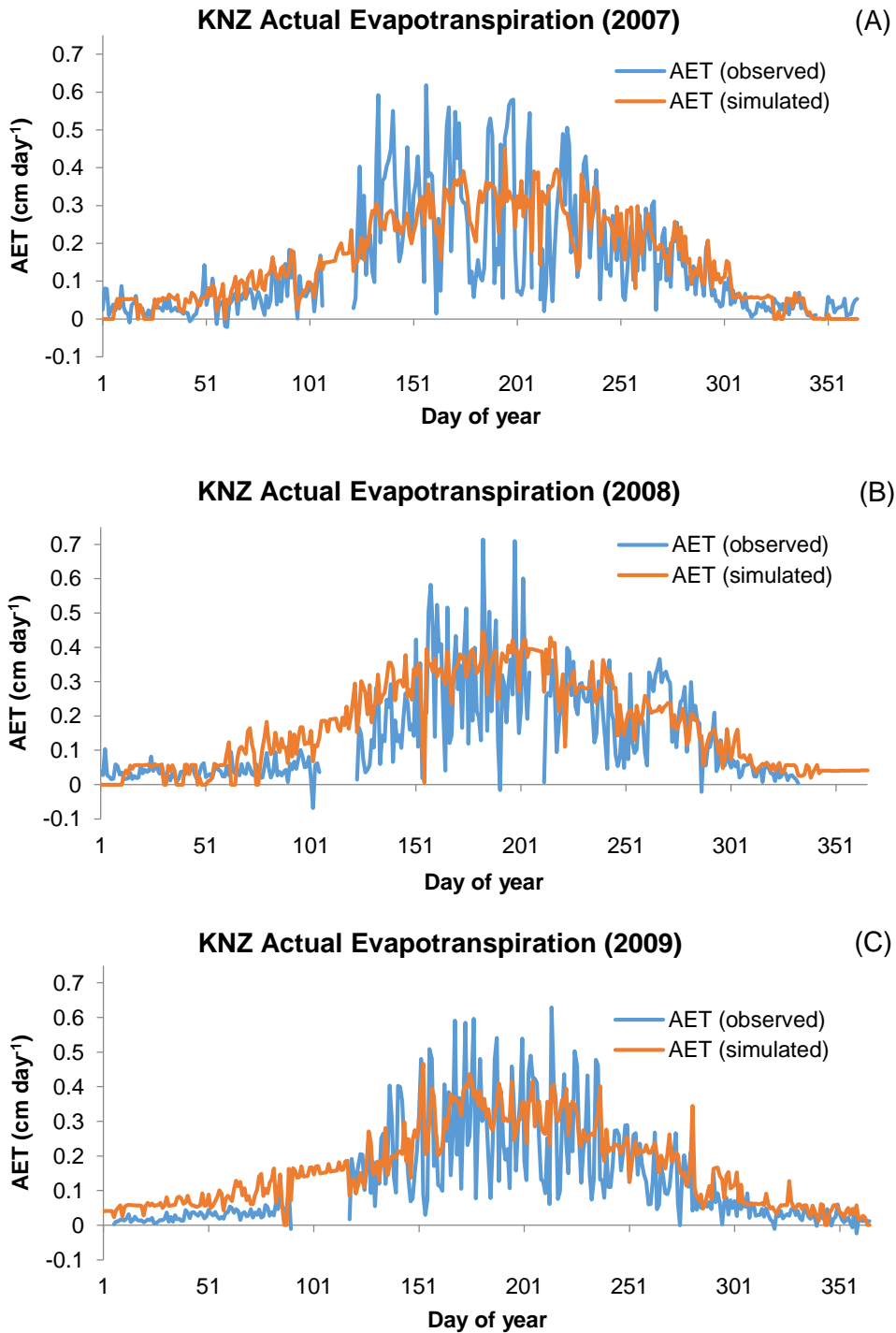


Figure S1. Observed vs. simulated daily actual evapotranspiration (AET) at the KNZ site in 2007 (A), 2008 (B), and 2009 (C). The observed AET was from eddy covariance measurements.

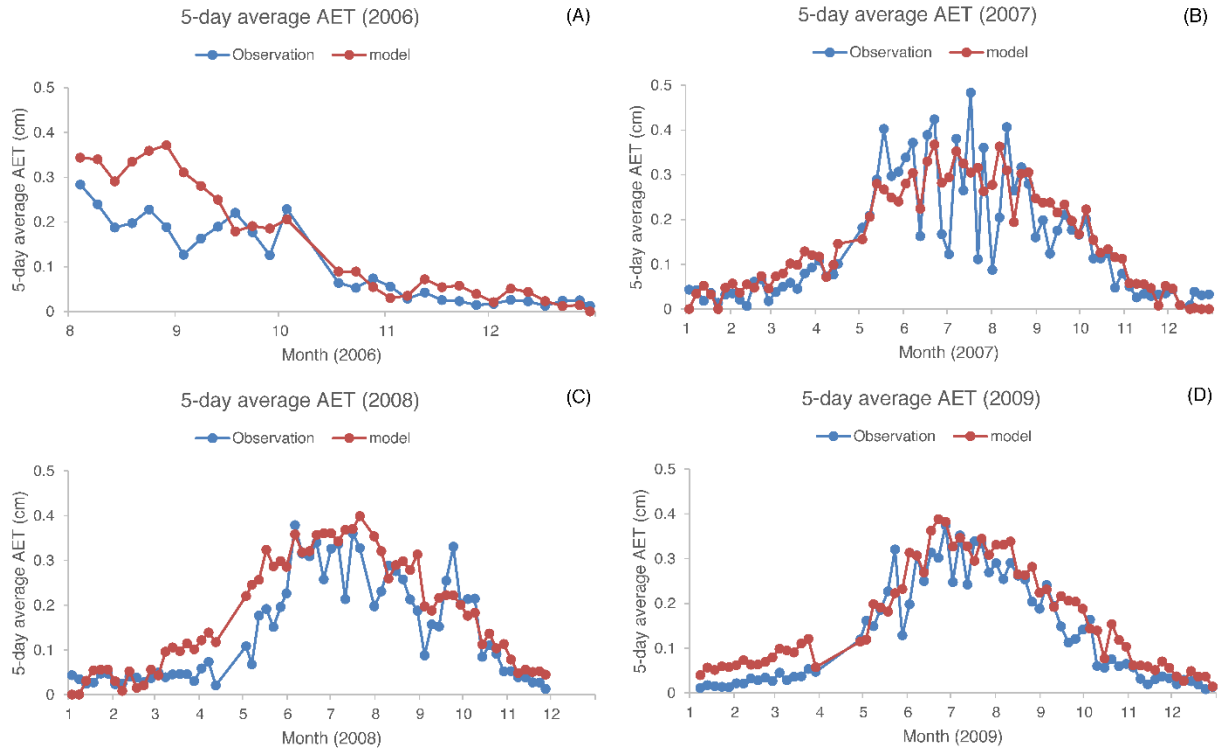


Figure S2. Observed vs. simulated 5-day average AET at the KNZ site in 2006 (A), 2007 (B), 2008 (C), and 2009 (D).

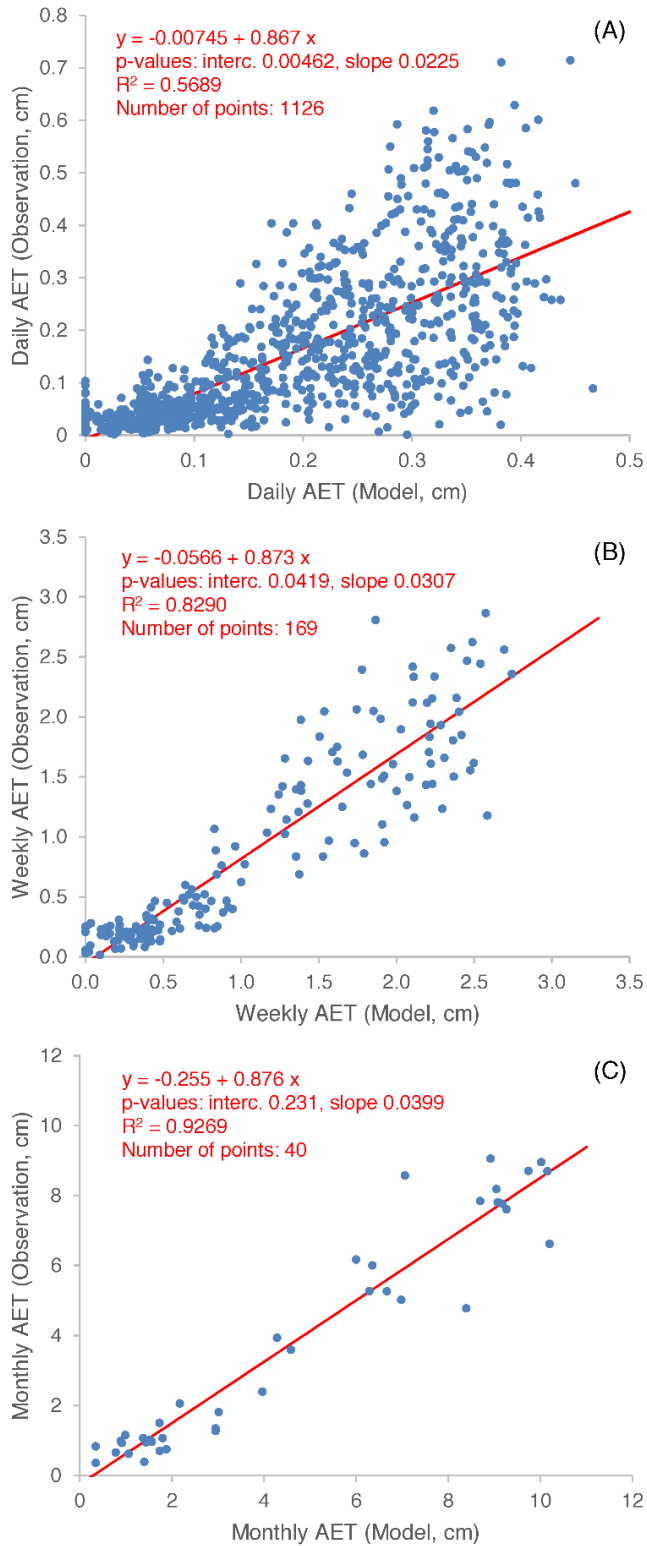


Figure S3. Scatter plots of observed vs. simulated AET at the KNZ site accumulated on the daily (A), weekly (B), and monthly (C) scales.

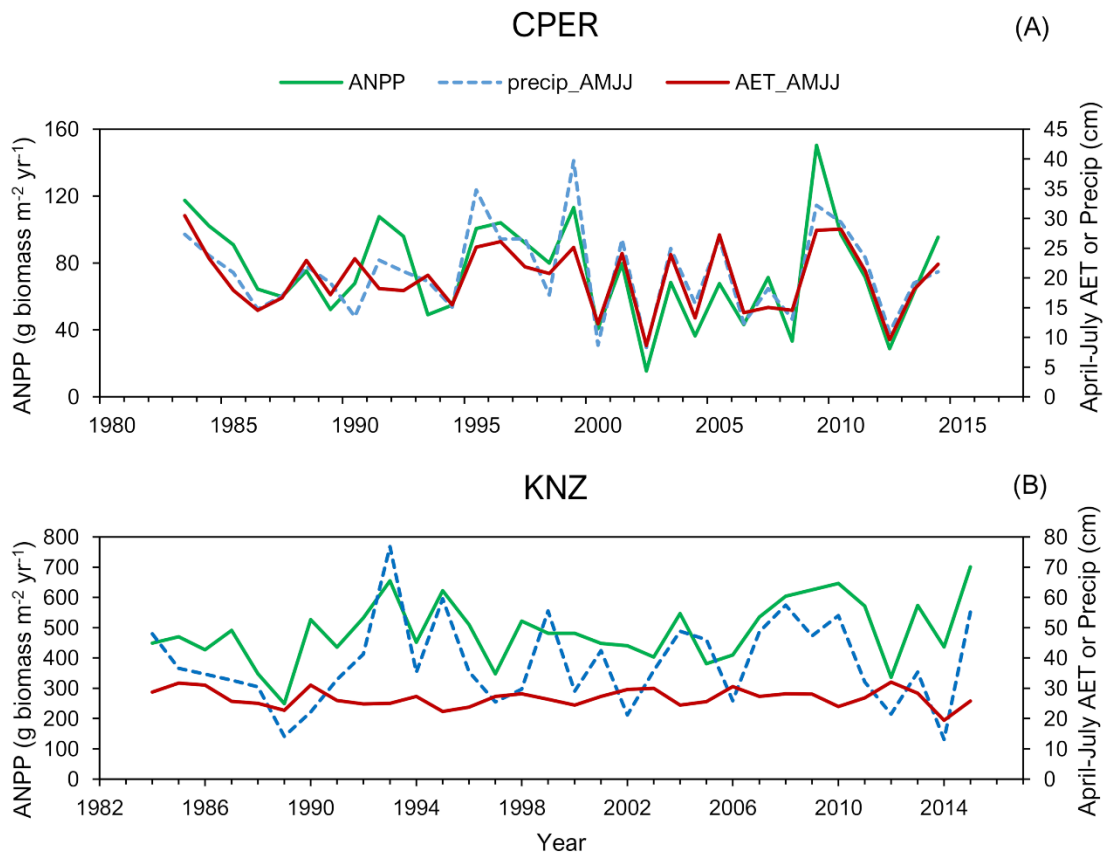


Figure S4. Time series of annual ANPP with cumulative April-to-July AET and precipitation for the CPER (dry) and KNZ (wet) sites.